

**NAGPUR CANCER REGISTRY DIVISION  
OF  
THE MUMBAI CANCER REGISTRY**

**CANCER  
INCIDENCE AND MORTALITY  
IN  
NAGPUR CITY  
2005-2009**

INDIAN CANCER SOCIETY  
PAREL, MUMBAI, 400 012  
INDIA

**CANCER  
INCIDENCE AND MORTALITY  
IN  
NAGPUR CITY  
2005-2009**

**Dr.A.P.Kurkure**

Hon. Secretary & Managing Trustee,  
Indian Cancer Society

.

**Dr.Krishna Kamble**

Hon Secretary,  
Nagpur Cancer Registry Division,  
Indian Cancer Society

**Shravani Koyande**

Executive In-Charge  
Mumbai Cancer Registry  
Indian Cancer Society

**Vaishali Thorat**

Research Assistant  
Mumbai Cancer Registry  
Indian Cancer Society

**Anupama Phadke**

Graduate Assistant  
Mumbai Cancer Registry  
Indian Cancer Society

INDIAN CANCER SOCIETY  
PAREL, MUMBAI, 400 012  
INDIA

## **Acknowledgements**

In order to identify the etiological factors that might be implicated in a segment of a selected population, it is essential to determine the behavioral patterns, habits, customs and environmental background of the group under study. It is also necessary to identify the differences if any, in the site patterns and incidence rates of the disease, amongst various communities living in geographical areas having varying patterns of climate and physical environment by identifying the dietary habits, social customs and such other factors in the social population.

With this aim in mind, we established satellite cancer registries in population zones of different sizes in Maharashtra, so that the cancer problem throughout the state could be investigated in-depth, in the light of the experience gained at the Mumbai Metropolitan Registry. Thus the first satellite registry was established in Poona City in 1972, the second at Aurangabad in 1978 and the third in Nagpur in 1980.

The Nagpur Cancer Registry Division of the Mumbai Cancer Registry became operative in January, 1980 as a collaborative effort with the Nagpur Medical College. The head of the department of surgery at the Medical College was entrusted with the day-to-day work relating to the registry.

We are grateful to the administration and staff members of various hospitals and consultants in private practice in Nagpur and Bombay, without whose cooperation, our efforts to register all the resident cancer cases in Nagpur, would not have succeeded. The executive Health Officer of the Nagpur Municipal Corporation deserves special mention and we sincerely thank him, for making the death records of the city population freely available to us. We also thank him, for making the death records of the city population freely available to us. We also wish to thank the Director of census operations of the Maharashtra State, for supplying us with the population breakdown according to age, sex and religion of Nagpur City. We are indebted to the dean of the Nagpur Medical College, for permitting us to examine the medical records of the hospital and providing adequate office space for our staff members.

*Dr.A.P.Kurkure*  
*Dr.KMKamble*  
*Shravani Koyande*

***Staff of Nagpur Cancer Registry***

***Medical Social Investigators***

*Miss.R.K.Kamble, M.S.W. (Retired)*

*Mrs.R.K.Ingole, M.S.W.*

*Mrs.P.Y.Warade, M.S.W.*

*Mrs.R.M.Bhagat, M.S.W.*

***Honorary Supervisor***

*Mrs.R.C.Patil, M.Com*

## Contents

<i>No.</i>		<i>Page</i>
1.	Introduction	7
2.	Historical Background of Nagpur City	7
2.	Demographic Characteristics of Nagpur City	7
3.	Population Estimates	8
4.	Cancer Registration System	9
5.	Working of the Registry	10
6.	Sources of the Data	11
7.	Cancer Incidence Reporting System	11
8.	Results	11
	Site	12
	Age	13
	Method of Diagnosis	18
	Religion	19
	Histology	21
9.	Cumulative Incidence Rates	21
10.	Childhood Cancers	23
11.	Tobacco Related Cancers	24
12.	Mortality	24
13.	Publications	44
14.	Appendix	52

**Tables**

1.	Estimated resident population by age and sex, as on 1 <sup>st</sup> July 2007 (Mid-point of the period 2005-09), Nagpur City Agglomeration, Total Population (All Religious communities)	28
2.	Estimated resident population by religion and sex, as on 1 <sup>st</sup> July 2007 (Mid-point of the period 2005-09), Nagpur City Agglomeration	28
3.	Incident cases of cancer by source and year of registration, with percentages, Males, Nagpur City Agglomeration, 2005-09.	29
4.	Incident cases of cancer by source and year of registration, with percentages, Females, Nagpur City Agglomeration, 2005-09.	29
5.	Number of Incident cases of cancer by site group (ICD10) and year of registration with percentages, Nagpur City Agglomeration, Male, 2005-09.	30
6.	Number of Incident cases of cancer by site group (ICD10) and year of registration with percentages, Nagpur City Agglomeration, Females, 2005-09.	30
7.	Number of Incident cases of cancer by site (ICD10) and age with percentages, Nagpur City Agglomeration, Male, 2005-09.	31
8.	Number of Incident cases of cancer by site (ICD10) and age with percentages, Nagpur City Agglomeration, Female, 2005-09.	32
9.	Average Annual age-specific, World age-adjusted and truncated (35-64 years) incidence rates of newly diagnosed cancer cases per 100,000 person Nagpur City Agglomeration, Male, 2005-09.	33
10	Average Annual age-specific, World age-adjusted and truncated (35-64 years) incidence rates of newly diagnosed cancer cases per 100,000 person Nagpur City Agglomeration, Female, 2005-09.	34
11.	Incident cases of cancer by site (ICD10) and Method of Diagnosis with percentages, Nagpur City Agglomeration, Male, 2005-09.	35
12.	Incident cases of cancer by site (ICD10) and Method of Diagnosis with percentages, Nagpur City Agglomeration, Female, 2005-09.	36
13.	Incident cases of cancer by site (ICD10) and Religion with Crude Rates Nagpur City Agglomeration, Male, 2005-09.	37
14.	Incident cases of cancer by site (ICD10) and Religion with Crude Rates, Nagpur City Agglomeration, Female, 2005-09.	38
15.	Number of Histologically proved Incident cases of Cancer by Sex with Percentages, 2005-09, Nagpur City.	39
16.	Number of Cancer deaths by age and site (ICD10), with percentages (Deaths in Period), Nagpur City Agglomeration, Male, 2005-09.	40
17.	Number of Cancer deaths by age and site (ICD10), with percentages (Deaths in Period), Nagpur City Agglomeration, Female, 2005-09.	41
18.	Age-Specific, World Age-adjusted, and truncated (35-64 years) death rate per 100,000 persons, Nagpur City Agglomeration, Male, 2005-09.	42
19.	Age-Specific, World Age-adjusted, and truncated (35-64 years) death rate per 100,000 persons, Nagpur City Agglomeration, Female, 2005-09.	43

## **Introduction**

This is the ninth publication in the series “Cancer Morbidity and Mortality in Nagpur City Agglomeration”. In this publication the new cancer cases diagnosed among the residents of Nagpur City Agglomeration during the period, 2005-09 are analyzed and presented.

## **Historical background of Nagpur**

Human existence around present day Nagpur city can be traced back to 3000 years to 8<sup>th</sup> century B.C. The first reference to the name, Nagpur is found on a Copper plate inscription at Devli near Wardha. The tradition ascribes the founding of Nagpur to Bakht Buland, a prince of Gond Kingdom in the year 1700.

Later on, it was ruled by Maratha kings from 1743 till British took control of Nagpur in 1853. From 1853 to 1861 the Nagpur province became the part of Central province and Berrar and came under the administration of Commission or under British Government with Nagpur as its capital. Tata Group started country's first textile mill at Nagpur, formally known as the Spinning & Weaving Company Ltd. The company was popularly known as the “Empress Mill” and was inaugurated on 1<sup>st</sup> January 1877, the day when Queen Victoria was proclaimed as Empress of India.

After independence in 1947, Central Province & Berrar became the province of India and in 1950, it became the Indian state of Madhya Pradesh, again Nagpur as its capital. However, when the Indian states were reorganized along the linguistic lines in 1956, the Nagpur region and Berrar was transferred to Bombay State, which in 1960 was split between the states of Maharashtra and Gujarat and Nagpur remained with the state of Maharashtra. Nagpur lost the status of capital and become the second capital of state of Maharashtra with the provision of one assembly session at Nagpur.

## **Demographic characteristics of Nagpur city**

Nagpur city lies on the Deccan Plateau of Indian Peninsula on plateau between latitude 21, 06 North and longitude 79, 03 East. Nagpur city has many natural lakes, like Ambazari, Futula, Gore wada and Telankhedi, while man made lakes are Sonegaon and Gandhisagar. Nagpur city receives water supply mainly from Pench Project and Kanhan River.

Nagpur is administered by Nagpur Municipal Corporation (NMC) along with Nagpur Improvement Trust (NIT). Marathi is official language while “Varhadi”, a dialect of Marathi is spoken in and around Nagpur. However, Hindi is also spoken equally fluently which shows its previous connection with Madhya Pradesh, a Hindi speaking state.

## ***Characteristics of Nagpur city***

Nagpur is the largest city in Central India. It is the second capital of Maharashtra. Nagpur is the Head Quarter for the Nagpur District and Nagpur. It is the 13<sup>th</sup> largest urban conglomeration in India, 114<sup>th</sup> largest city in the world and ranks 143<sup>rd</sup> largest urban area in terms of population. Nagpur lies in the Centre of India with Zero Mile mark located. Nagpur is important location for Dalit Buddhist Movement and Hindu Nationalist Organization like R.S.S and V.H.P. Nagpur is strategically important as it is situated at the Cross roads of India's North –South & East-West routes by roads, rail and Air. It is the cosmopolitan city having people from different religions, faith, from other parts of India.

Nagpur is the second most slum populated city in Maharashtra after Mumbai. Scheduled casts and scheduled tribes are around are around 25% of the population. The sex ratio is 936 females per 1000 males as per 2001 census.

Nagpur was judged as the cleanest and second greenest city in India. It is top seventh city in ranking for I.T. Industry in the country. It is one of the most healthy and aware city among the top ten cities in India.

Butibori Industrial Area is the largest in all of Asia in terms of area. Currently, Nagpur is becoming an economic boon as MIHAN (Multi-nodal International Cargo Hub and Airport at Nagpur) which will be used for handling heavy cargo coming from South East Asia and Middle East Asia.

### ***Health Status of Nagpur***

As per 2001 census report, the total urban population of Nagpur was 21, 29,500 with about 4,10,000 households in the city. The midyear population for the year 2008 is estimated as 23, 63,994. It is estimated that about 99.4% of the total Nagpur population is into non-agricultural activities. The rural literacy rate is 75.76% and for urban it is 88.75%

There are total 683 hospitals registered in Nagpur. The major Govt. Hospitals with indoor facilities are government Medical College Hospital, Indira Gandhi Medical College Hospital (MAYO General Hospital) and Daga Memorial Hospital. CGHS has 10 Hospitals while ESIS has 13 dispensaries and one hospitals. NMC has 45 dispensaries and 3 hospitals. There are many private hospitals like Mure Memorial, Nagarik Sahakari, Lata Mangeshkar, Matru-Seva Sangh, Janata, Radhakrishna, Orange City, Care, Wockhart, Suretake etc. with the total indoor beds available in private hospitals is about 5500.

### ***Climatic conditions in Nagpur***

Minimum temp in January	:	10.8C
Maximum temperature in May-June	:	42.6C
Maximum rainfall in July	:	310.02mm
Annual Total rainfall	:	1196mm

### **Population Estimates**

The Nagpur City Agglomeration includes the Nagpur Municipal Corporation, the Camptee Municipal Area and the Camptee Cantonment.

The base population was estimated from the 1991 and 2001 census reports of Maharashtra State. The population of Nagpur City Agglomeration as on 1<sup>st</sup> July 2007, the midpoint of the period under review (2005-2009), is estimated by Distribution Method.

The estimated population of the Nagpur City Agglomeration, as on 1<sup>st</sup> July 2007 (the midpoint of the period 2005-2009), is 2.12 million (1.09 million males and 1.03 million females). Population distribution by age and sex for Nagpur City Agglomeration for the year 2007 is shown in the age-pyramid (Fig. 1). The estimated population by age and sex is given in Table 1, and by religion and sex in Table 2.



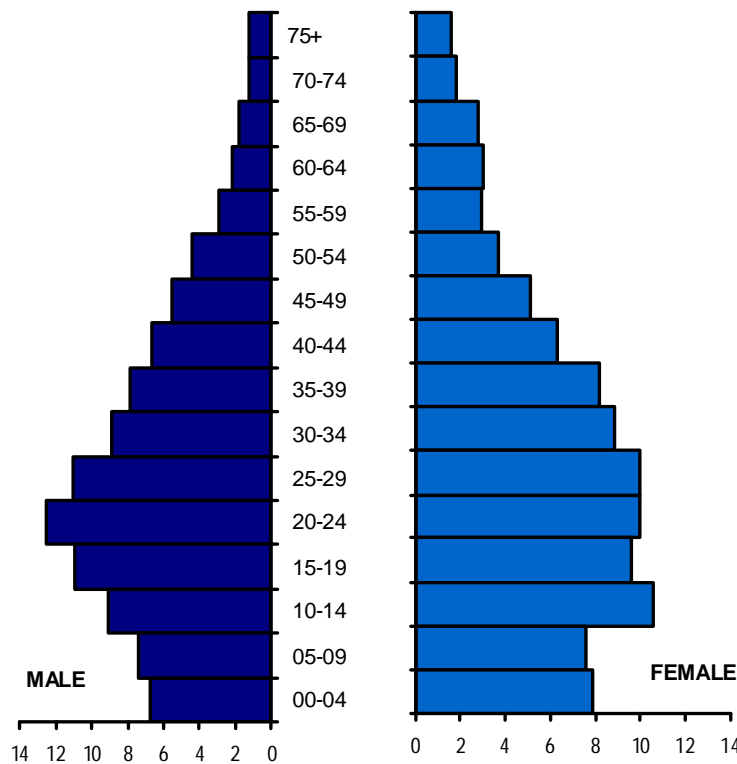


Fig.1: Percentage Distribution of Estimated Resident Population of Nagpur City as on 1<sup>st</sup> July 2007

### Cancer Registration System

Population based cancer registration is a procedure evolved to obtain detailed information on all persons affected by the disease who are resident within a precisely defined geographical area, which can be pooled and analyzed at a centralized depository. Such a registry differs in many ways from a survey, wherein similar information is obtained only as a spot check, during a select period of time, which can thus reveal only the prevalence of a disease, at a given time. The collection of factual information on the other hand is a continuous process in a registry setup, where efforts are made to obtain the necessary information, as soon as possible after diagnosis has been made.

During the period 2005-09, information was obtained from all cancer patients registered in hospital, under the care of consultants, physicians, surgeons, gynecologists and radiologists in Nagpur City and from Nagpur residents under treatment at the Tata Memorial and the other leading hospitals in near by Mumbai City. General medical practitioners are not contacted individually, because according to local practice only medical specialists treat cancer patients in hospitals and nursing homes and even those patients not admitted for hospital care are at the stage or the other referred to such specialists by the general practitioners. The death records maintained by the Nagpur Municipal Corporation provide a means for checking on any missed cases.

## **Working of the Registry**

Staff members personally visit the wards of the co-operating hospitals regularly; to interview all confirmed cancer patients and also those who are under cancer investigation. The record files maintained by the various departments of these hospitals viz. Pathology, Hematology, Radiology and the various registers in the specialized surgical and medical wards, are also examined.

The requisite details for each patient are cross-checked with the information collected from the various departments of the collaborating hospitals, to ensure completeness of records. Full information on every cancer patients registered at each and every hospital is thus obtained, irrespective of whether or not the patient is subsequently treated at the particular hospital. Additional information is obtained every time a cancer patient is re-admitted or re-examined at the institution.

As a result of such data collection from different hospitals, one and the same patients is sometimes found to be registered at two or more hospitals. Care is taken, to see that multiple entries for the same patient are not made in our records. On the other hand in some instances complete medical information is obtained by combining the data obtained from two or more hospitals, of one and the same patient.

Supplementary information can often be gleaned from the death record maintained by the Vital Statistics Division of the Nagpur Municipal Corporation. Copies are made of all death certificates which mention cancer or tumor as the cause of deaths. These death certificates are then matched against the registered cases in our files. Every cancer death not traceable to an entry in our files is labeled as an “unmatched death” and the date of death is then taken as the date of the first diagnosis, and is so register in the corresponding years data file. Furthermore copies of all death certificates where the term ‘Cancer’ or ‘Tumor’ is mentioned as the cause of death are individually scrutinized to confirm the statement.

Only patients residing in Nagpur City and suburbs are included in the register so that the information collected could be related to a known population at risk. Non-residents, whose residence cannot be specifically confirmed, are also not included in the study.

After collecting the necessary information from the various collaborating institutes, the proforma sheets are classified into three groups, resident, non-resident and residence not known. Non-residents cases are filed site wise and sexwise. If the cancer patient, whose duration of residence is not known, is found enrolled in the electoral rolls, he is considered as a resident. All other cases, whose duration of residence is not known, are filed alphabetically. The resident case are cross checked with the cards for the alphabetic index. Previously reported cases were edited and the new cases were registered and filed according to the site of cancer, the sex pf the patient and the registration number.

Copies of the death certificates, from the Vital Statistics Department of the Municipal Corporation re classified according to residential criteria. Non-resident cases are filed alphabetically, as per cause of death and sex. Resident cases are checked with the alphabetic index. Unmatched cases are registered in the morbidity files. All deaths (matched and unmatched) are entered separately in the corresponding years death files, and are filed numerically by sex and cause of death.

## Sources of the Data

Two major sources are utilized for data collection:

- All hospitals, nursing homes and consultants (specialists in private practice, in the registry area)
- The Vital Statistics Division of the Department of Public Health of the Nagpur Municipal Corporation.

## Cancer Incidence Reporting System

Cancer incidence is defined as the occurrence of new cancer cases in a defined population during a specified time period. For the purpose of this report, 2005-09 incidence is based on those cancers registered and which were first diagnosed between 1<sup>st</sup> January 2005 and 31<sup>st</sup> December 2009 from residents of Nagpur City Agglomeration.

All malignant tumors including those where the pathologist may have merely suspected a malignant change are registered. Cases under code O' (benign) 'I' (uncertain whether benign or malignant borderline malignancies) or '2' (carcinoma in situ) are not include. Patients, in whom cancer has been ruled out or has not yet been diagnosed, are also omitted from our register.

We utilize the coding system devised by the World Health Organization using code numbers, C00-C97 as published in the Manual of International Classification of Diseases, Injuries and causes of Death (10<sup>th</sup> revision of 1992). We also use the International Classification of Disease for Oncology (1976), (ICD-O) simultaneously, for coding the primary site.

For histology coding, the World Health Organization's third edition of International Classification of Diseases for Oncology (ICD\_O3), 2000, giving histogenic and malignancy codes is followed, in conjunction with the primary site codes suggested by the World Health Organization.

## Results

During the period under review (2005-09), 9447 new cancer cases were registered among residents of Nagpur which gives an average of 1889 new cases per annum. Of these 9447 new cases, 4580 were males and 4867 were females indicating a M/F sex ration of 0.94:1 which is somewhat same of the M/F sex ratio in the general population viz. 1.06:1.

The number of new cases by year and sources of registration with percentage distribution for males and females is presented in Table 3 and 4 respectively. Out of the 9447 new cancer cases, 9200 (97.4%) were registered through collaborating hospitals and 247 (2.6%) were registered from Municipal Corporation files. The maximum number of cases came from MCH, followed by Rashtriya Sant Tukdoji and Mayo Hospital. The number of incident cases by year and sex is shown in Fig.2.

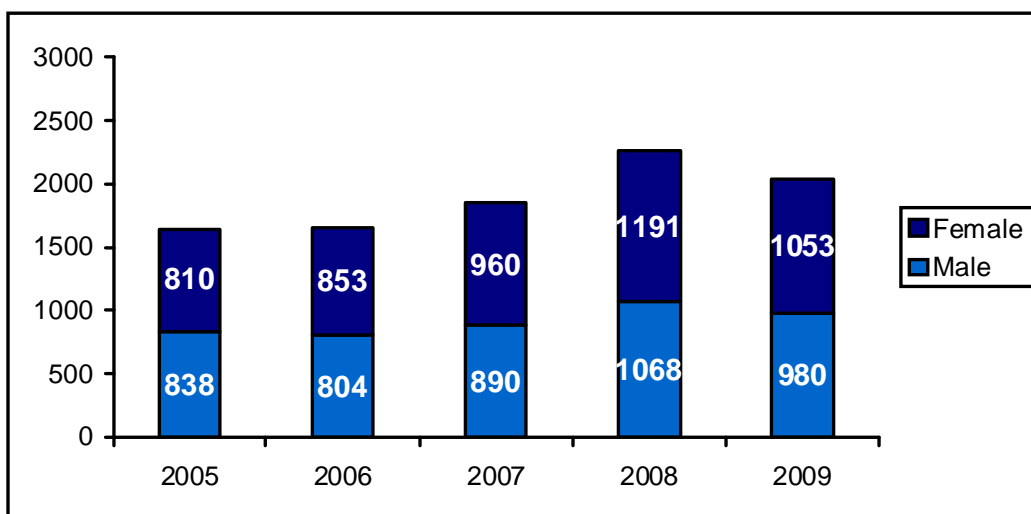


Fig.2: Number of Incident Cases of Cancer by Sex and Year of Registration

## Site

The number of new cancer cases by site group, sex and year of diagnosis with percentage distribution is given in Table 5 and 6.

The percentage distribution of new cancer cases diagnosed during 2005-09, by site group and sex is present in Table A. The digestive buccal cavity and pharynx as a whole in males is found to be the commonest cancer site group followed by digestive organs. In females, the breast ranked first followed by cancer of the genital organs and then digestive system.

Site Group	Male		Female		Total	
	Cases	%	Cases	%	Cases	%
Buccal Cavity & Pharynx	1093	23.9	381	7.8	1474	15.6
Digestive Organs	936	20.4	635	13.0	1571	16.6
Respiratory Organs	659	14.4	160	3.3	819	8.6
Bone, C.Tissues,	148	3.2	109	2.2	257	2.7
Skin	62	1.4	58	1.2	120	1.2
Breast	74	1.6	1484	30.5	1558	16.4
Genital Organs	278	6.1	1189	24.4	1467	15.5
Urinary Organs	156	3.4	51	1.0	207	2.1
Eye and Nervous System	142	3.1	102	2.1	244	2.5
Thyroid & Endocrine Glands	38	0.8	54	1.1	92	0.9
Lymphnodes and Sec.Unspecified	474	10.3	313	6.4	787	8.3
Lymphatic System	260	5.7	148	3.0	408	4.3
Leukemias	260	5.7	183	3.8	443	4.6
Total	4580	100.0	4867	100.0	9447	100.0

## Age

The number of new cancer cases by site and age are presented in Table 7 and 8 for the period 2005-09, for males and females respectively. In males, the mouth as a single organ was found to be most vulnerable to cancer followed by larynx, lung, tongue and oesophagus in descending order. In females, the breast ranked first in incidence, followed by cervix, ovary, oesophagus and uterus in that order. Male preponderance is seen at all sites, except for breast and genital organs.

The current distribution of the resident population and the new cancer cases by broad age groups and sex for the period 2005-09 is presented in Table B.

Age Group	Population			New Cancer Cases		
	Male	Female	Total	Male	Female	Total
00-14	14.75	12.72	26.48	2.01	1.34	3.35
15-34	19.62	18.74	38.36	5.24	6.40	11.64
35-64	15.28	14.19	29.48	27.40	33.28	60.68
65+	2.68	3.03	5.66	13.82	10.49	24.31
Total	51.29	48.70	100.0	48.48	51.51	100.0

This clearly indicates that cancer occurs mostly at older ages, as only 3.35% of the total number of cancer cases registered, were under 15 years of age, although this age group accounts for 26.48% of the total population in the Agglomeration. The association of cancer with the aging process is clearly shown by the fact that 24.31% of the cases were diagnosed in those aged 65 and above, an age group, which comprises only 5.1366% of the population (Fig.3).

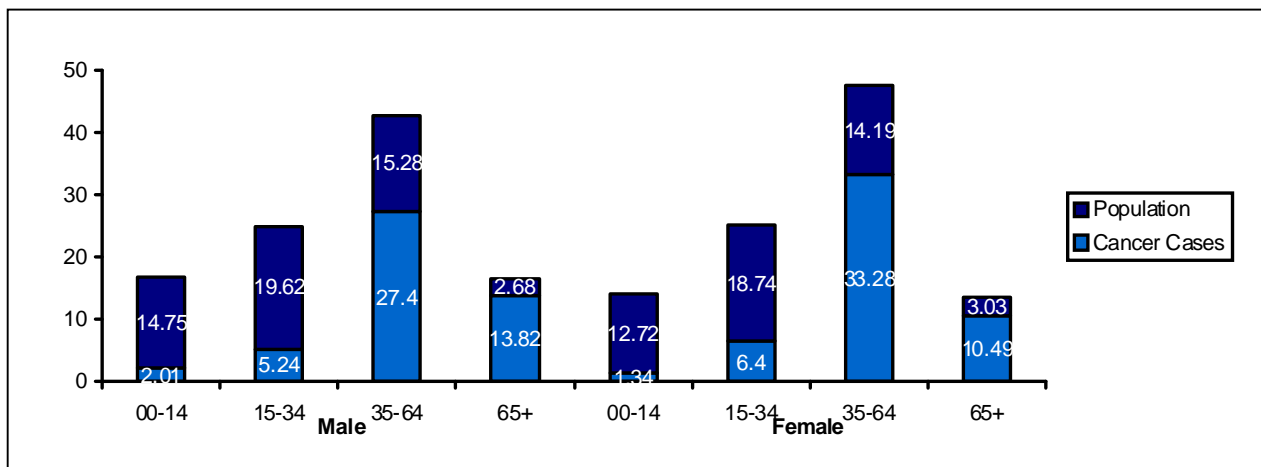


Fig.3: Percentage Distribution of the Resident Population and Cancer Cases

Average annual age-specific, crude, age-adjusted and truncated incidence rates by sites are given in Table 9 & 10 for males and females respectively.

By relating the average annual incidence to the estimated resident population of Nagpur City Agglomeration as on 1<sup>st</sup> July 2007 (mid point of the period 2005-09), we find a crude cancer incidence rate of 79.5 per 100,000 population. The crude cancer incidence rate for females 84.1 was found to be higher than that for males 75.2

Average annual age-specific incidence rates per 100,000 populations for all cancer sites together by sex for the period 2005-09 are presented in Table C.

Table C: Average Annual Age Specific Incidence Rates per 100,000 Population For All Cancer Sites, By Sex, 2005-09		
Age-Group	Male	Female
00-04	9.4	9.2
05-09	15.3	7.7
10-14	10.6	8.3
15-19	11.5	12.3
20-24	19.2	19.1
25-29	19.5	23.7
30-34	36.4	56.1
35-39	50.2	79.4
40-44	86.8	146.5
45-49	128.0	194.3
50-54	196.8	296.2
55-59	262.1	268.2
60-64	393.8	338.4
65-69	427.3	293.8
70-74	378.0	250.4
75+	395.8	204.6
Total	75.2	84.1

Cancer incidence rates were found to increase sharply with age. The curves for men and women however were quite distinct. At the younger age the incidence rates were found to be somewhat higher in males. Age-specific incidence rates were higher in females only between the ages 25 to 59. The frequent occurrence of cancers involving the female genital organs and the breast, perhaps accounts for most of the differences noted between male and females rates between the ages 25-59. Around the age of 60, the incidence curves for men and women intersect, the high incidence rates for the older males are perhaps primarily due to the high incidence of lung, stomach, larynx and prostate cancers (Fig 4).

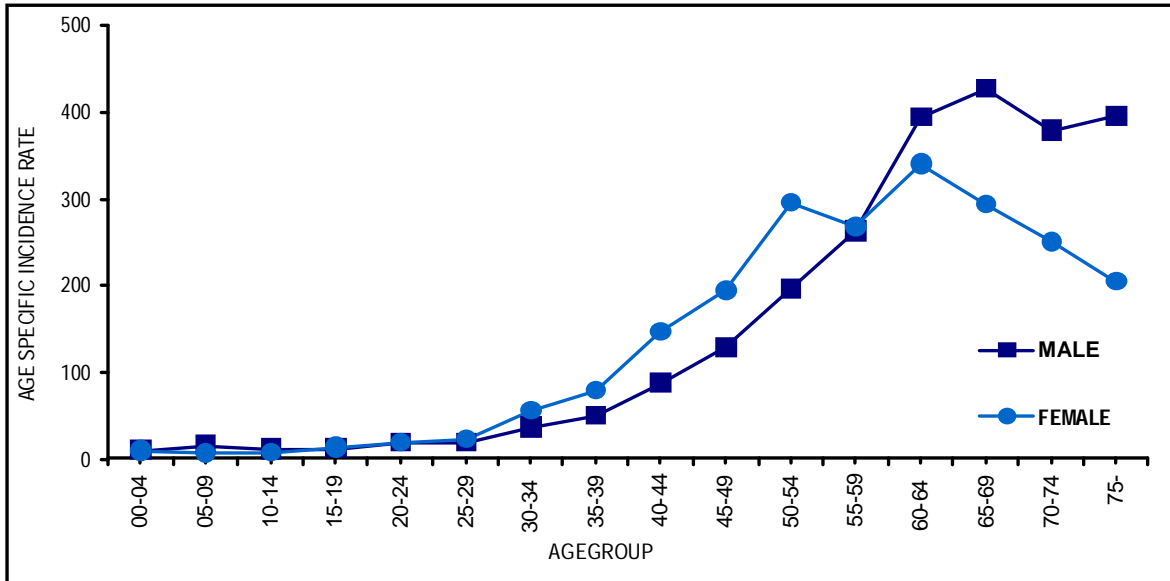


Fig.4 : Age Specific Incidence Rates Per 100,000 Population, For All Cancer Sites

Since the incidence of cancer is known to increase with age, comparison of the rates between different populations, should take into consideration the age composition of each group. The commonly accepted method of minimizing the difference in age distribution of the incidence rates is to base the rates to be compared, on a common age distribution. Cancer incidence rates adjusted to the age distribution, of the population of the World taken as a whole, indicated that the age-adjusted incidence rate of cancer in men at 92.7 is somewhat lower than that in women at 95.6

The most common sites of cancer based on age adjusted incidence rates in males and females are shown in Table D. In males, the larynx being the leading site with the lung coming second in rank. Oesophagus ranks third and tongue ranks fourth in men. Cancers of the breast and cervix were found to predominate in females, the breast being the leading site with uterine cervix coming second in rank. The ovary ranks third and oesophagus ranks fourth in women (Fig.5).

Rank	Male			Female			
	ICD10	Site	AAR	Rank	ICD10	Site	AAR
1.	C32	Larynx	7.0	1	C50	Breast	29.1
2.	C34	Lung	6.5	2.	C53	Cervix	14.8
3.	C15	Oesophagus	6.2	3.	C56	Ovary	5.7
4.	C02	Tongue	6.0	4.	C15	Oesophagus	4.4
5.	C04-06	Mouth Other	6.0	5.	C91-95	Leukemia	3.5
6.	C91-95	Leukemia	4.7	6.	C81-85	Lymphoma	2.5
7.	C81-85	Lymphoma	3.8	7.	C55	Uterus	2.5
8.	C61	Prostate	3.3	8.	C02	Tongue	2.0
9.	C16	Stomach	3.3	9.	C16	Stomach	1.9
10	C12-13	Hypopharynx	3.2	10.	C34	Lung	1.8
AAR At All Sites			92.7	AAR At All Sites			95.6

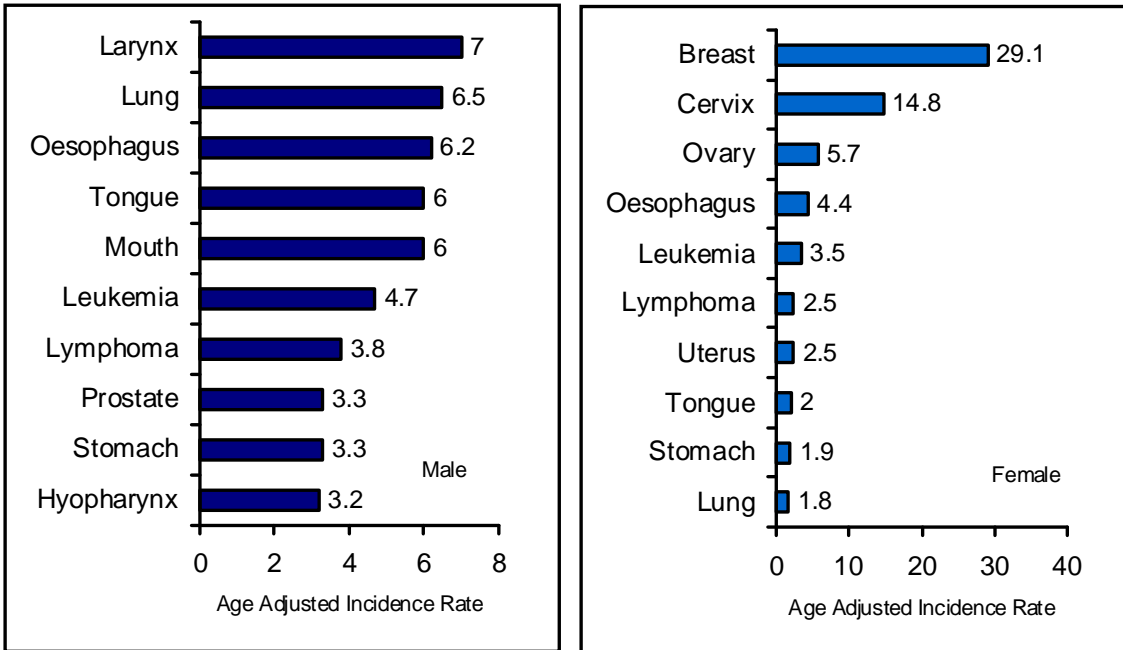


Fig.5: Age Adjusted Incidence Rates per 100,000 Population at Ten Leading Sites 2005-09

Age reporting was found to be more reliable in the age group 35-64. The truncated incidence rates between the ages 35-64 adjusted to the age distribution of the world population, are presented in Table E, where ten leading cancer sites ranked as per truncated rates for males and females are given (Fig 6).

Male				Female			
Rank	ICD10	Site	TR	Rank	ICD10	Site	TR
1	C02	Tongue	14.8	1	C50	Breast	75.0
2	C32	Larynx	14.5	2	C53	Cervix	37.1
3	C04-06	Mouth	13.9	3	C56	Ovary	13.1
4	C34	Lung	12.9	4	C15	Oesophagus	9.8
5	C15	Oesophagus	11.6	5	C04-06	Mouth	6.0
6	C81-85	Gum	7.1	6	C55	Uterus	4.7
7	C16	Stomach	7.0	7	C34	Lung	4.7
8	C12-13	Hypopharynx	6.8	8	C02	Tongue	4.4
9	C19-21	Rectum	6.7	9	C91-95	Leukemia	4.2
10	C91-95	Leukemia	5.9	10	C19-21	Rectum	3.9
TR At All Sites			175.6	TR At All Sites			216.6



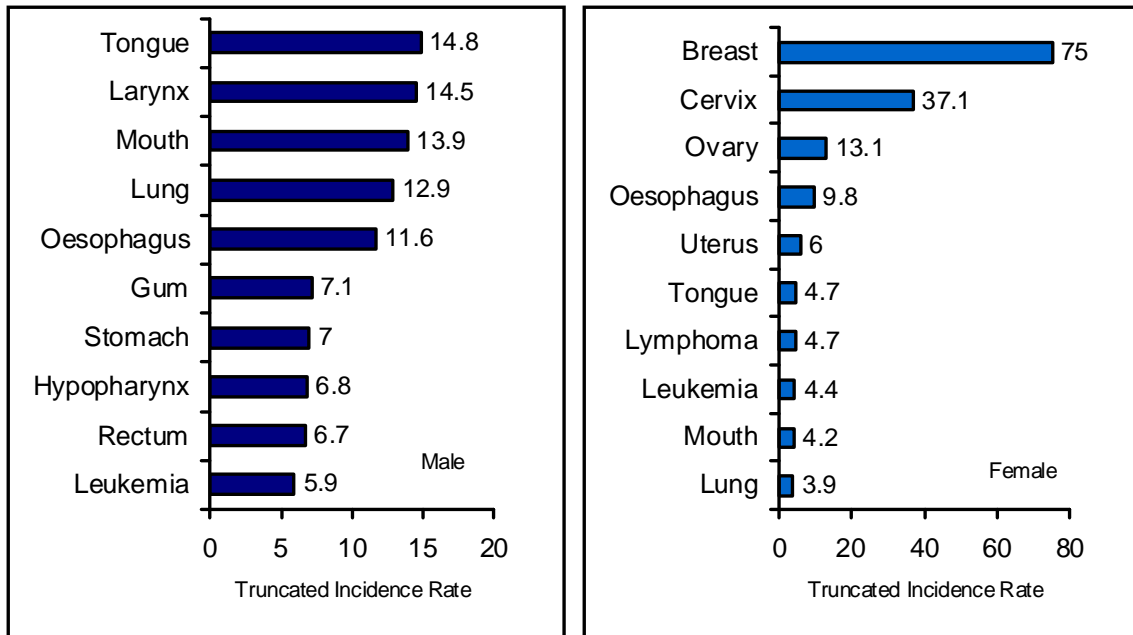


Fig.6: Truncated Incidence Rates per 100,000 Population at Ten Leading Sites, 2005-09.

In males, in the age-group 35-64, cancer of the Tongue ranks first followed by cancer of the Larynx, Mouth, Lung, and oesophagus, in descending order. In females, in the age-group 35-64. Cancer of the breast ranks first followed by cancer of the cervix, ovary, oesophagus and uterus in descending order.

The highest incidence rates by primary in males and females age-wise are presented in Table F. In children, both in males and females, leukemias were found to be predominant. In males, above the age of 40, larynx or oesophagus was the most frequent site of cancer. In females, breast was the most frequent sites of cancer above the age group of 25 to 69 and cancer of cervix is most predominant in older women having age more than 70 years..

Age-Group	Male		Female	
	Site	Rate	Site	Rate
00-04	Leukemias	2.8	Leukemias	4.6
05-09	Leukemias	5.6	Leukemias	4.2
10-14	Leukemias	4.1	Leukemias	4.0
15-19	Leukemias	3.2	Leukemias	2.3
20-24	Leukemias	3.5	Breast	3.5
25-29	Leukemias	2.6	Breast	6.0
30-34	Mouth	5.3	Breast	18.8
35-39	Mouth	7.5	Breast	33.6
40-44	Mouth	9.3	Breast	60.3
45-49	Tongue	13.3	Breast	77.5
50-54	Oesophagus	17.5	Breast	100.0
55-59	Larynx	24.7	Breast	83.2
60-64	Larynx	39.9	Breast	91.4
65-69	Lung	47.9	Breast	70.3
70-74	Oesophagus	34.0	Breast	54.9
75+	Oesophagus	43.2	Breast	32.1
All Ages	Larynx	7.0	Breast	29.1

### Method of Diagnosis

An evaluation of the reliability of cancer data is usually measure by the percentage of patients having microscopic proof of diagnosis as compared with other methods which are considered less accurate. The percentage of new cancer cases diagnosed by method of diagnosis and sex is presented in Table G. During the period 2005-09, 89.0% of the new cases record has microscopic confirmation of cancer. The percentage of patients diagnosed on the basis of clinical examination alone was 5.9% and 2.5% of cases were registered from death certificates alone. The number of new cancer cases by site and method of diagnosis for males and females are presented in Tables 11 and 12 respectively. The percentage distribution of the cases according to method of diagnosis is shown in Fig.7.

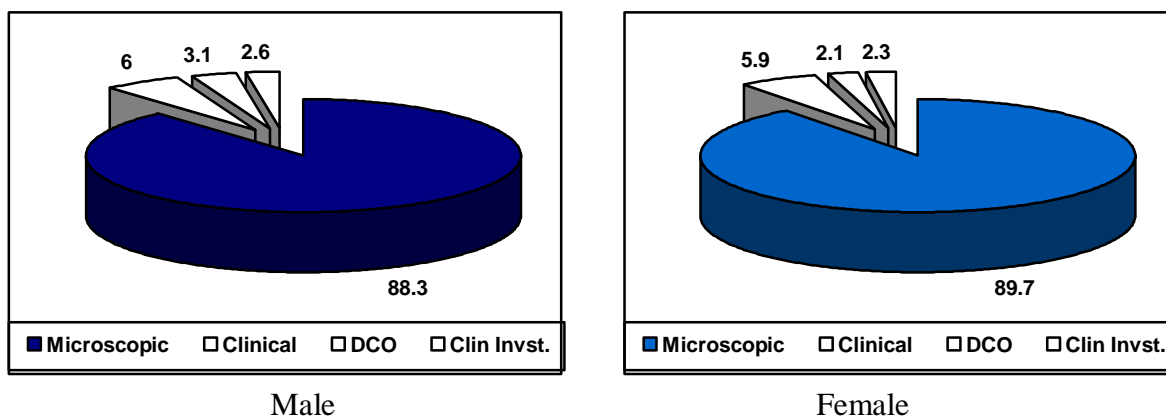


Fig.7: Percentage Distribution of the Incidence Cases of Cancer By Method of Diagnosis, 2005-09

The percentage of patients having microscopic confirmation of cancer, depends primarily on the accessibility of the part affected. Histological confirmation of cancers arising in the buccal cavity, pharynx and the female genital tract

are thus usually available with greater frequency than for tumors at inaccessible sites, such as the digestive and respiratory systems.

About 2.5% of cancer cases were registered through death certificates alone. This figure is considerably lower than in the previous years, which indicated the improvement in the coverage of the sources. Most probably these were patients with advanced disease who attended out-patient departments of various collaborating hospitals to seek medical advice at late stage, when no active treatment was possible.

Method of Diagnosis	Male		Female		Total	
	Cases	%	Cases	%	Cases	%
Microscopic	4046	88.3	4366	89.7	8412	89.0
Clinical	274	6.0	288	5.9	562	5.9
Clinical Investigation	118	2.6	110	2.3	228	2.4
DCO	142	3.1	103	2.1	245	2.6
Total	4580	100.0	4867	100.0	9447	99.9

## Religion

Considerable variation was noted in the incidence of cancer at various sites in both the sexes in patients having their domicile in other countries and in those professing different religious faiths within a particular population, due to a variety of cause mainly endocrine, dietary or environmental. Such variations call for adequate investigations, to elucidate the complex etiology of the disease.

To study the differences in cancer incidence by religion, the crude rates by religion and sex are presented in Table H. The highest incidence is note for Hindus (99.8) followed by Muslims (66.6) and Christians (49.7). From this table it is evident that different religious groups in Nagpur City Agglomeration exhibit considerable variation in the total incidence of cancer in each sex.

Religion	Male	Female	Total
Hindu	92.3	108.0	99.8
Muslim	72.0	61.3	66.6
Christian	51.9	47.2	49.7
Buddhist	3.7	3.1	3.3
Jain	12.3	12.9	12.6
Sikh	18.7	12.4	15.6
Total	75.2	84.1	79.5

The Hindu population appears to be at a higher risk than the Muslims and the Christians. Female preponderance was observed in Hindus and Buddhists (Fig.8).

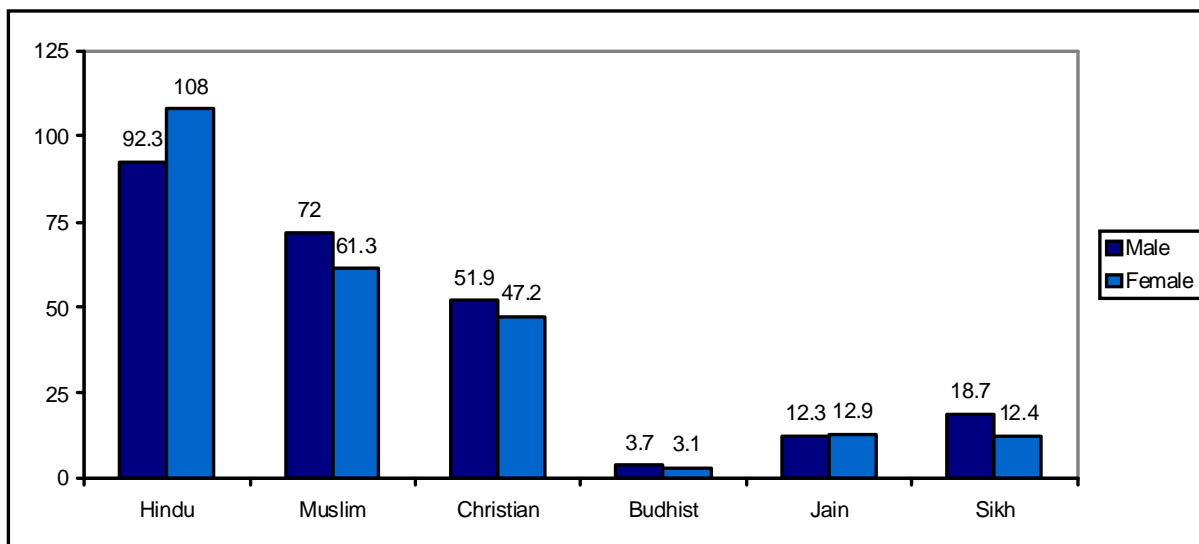


Fig.8: Crude Incidence Rates by Religion, 2005-09

The different religious groups are distinguished from each other by their habits, customs and socio-economic status. Thus, even though living in the same environment, they present striking differences from each other, in the relative frequency with which cancer occurs at various sites. An appraisal of this situation was thus considered promising, in order to study the differences in site patterns of incidence. In order to define the magnitude and the nature of differences observed, the number of cancer cases and the percentage distribution of new cases in each religious group by site is presented in Table 13 and 14 for males and females respectively.

The site incidence patterns exhibit considerable differences in the various religious groups. The most common cancer sites in major religious groups by sex are presented in Table I.

Religion	Male			Female		
	Rank	Site	%	Rank	Site	%
Hindus	1	Mouth	6.5	1	Breast	33.0
	2	Oesophagus	6.2	2	Cervix	17.2
	3	Tongue	6.0	3	Ovary	6.5
	4	Lung	5.8	4	Oesophagus	5.0
	5	Larynx	5.8	5	Leukemia	4.0
Muslims	1	Larynx	6.4	1	Breast	18.3
	2	Lung	5.5	2	Cervix	4.6
	3	Mouth	4.3	3	Ovary	3.1
	4	Tongue	3.7	4	Leukemia	2.2
	5	Leukemia	3.9	5	Oesophagus	2.0
Christians	1	Lymphoma	8.4	1	Breast	21.9
	2	Hypopharynx	4.2	2	Cervix	5.1
	3	Leukemia	2.8	3	Ovary	3.4
	4	Prostate	2.8	4	Lung	3.4
	5	Rectum	2.8	5	Oesophagus	1.7

Among males, in Hindus, the mouth is the leading site of cancer, while in Muslims, Larynx is the leading site and Christians, lymphoma is the leading site. Among females, the breast is the leading site in all three religious groups followed by cervix and ovary.

### **Histology**

During the period 2005-09, a total of 8214 cancers were confirmed microscopically, so that the proportion of histopathologically proved cases was found to be 89.0 %. The various histological varieties observed in the Nagpur City Agglomeration for the period 2005-09, by sex with percentage distribution is presented in Table 15.

Papillary and squamous cell neoplasms are found to be the commonest histological type constituting about 34.6 % of the total number of the Histologically proved cases. This is the most common variety affecting both males and females. The next common variety affecting males is adenocarcinomas and that affecting females is ductal, lobular and medullary neoplasms and adenocarcinomas.

### **Cumulative Incidence Rate**

The Cumulative incidence rate is simply a summary measure of the experience of a population over a longer time span or age interval. It is obtained by summing up the age specific incidences for each year in the defined age interval.

The cumulative incidence rate between birth to age 74 years is 5 times the sum of the age specific incidence rates calculated over five year age-groups, since age-specific incidence rates are usually computed for five year age intervals. The cumulative incidence is a directly standardized incidence rate and a good approximation to the actuarial or cumulative risk. The reason for interest in the cumulative incidence rate is that it has a useful probabilistic interpretation. Another advantage is that as a form of direct age standardization, the arbitrariness in choosing a standard population is removed and the computations of cumulative incidence rates are easier. The age cumulative incidence rates (00-74 years) are calculated for all sites in both the sexes (Table J). On an average 1 out of 10 males and 1 out of 10 in females gets cancer in his/her life time (0-74).

**Table J : Cumulative Rate (%) and Life Time Risk to Age 74 years by Site and Sex, Nagpur, 2005-09**

ICD10	SITE	Cum Rate%	LTR	Cum Rate%	LTR
C00	Lip	0.02	4692	0.03	3247
C01-02	Tongue	0.66	152	0.23	443
C03	Gum	0.33	302	0.20	499
C04-06	Other Mouth	0.65	154	0.24	421
C07-08	Salivary Gland	0.07	1336	0.04	2624
C09-10	Oropharynx	0.28	352	0.04	2781
C11	Nasopharynx	0.03	2976	0.01	8023
C12-13	Hypopharynx	0.36	281	0.08	1299
C14	Other Oral	0.04	2540	0.02	4920
C15	Oesophagus	0.73	136	0.50	202
C16	Stomach	0.39	258	0.23	441
C17	Small Intestine	0.01	16080	0.02	4670
C18	Colon	0.32	310	0.21	486
C19-21	Rectum	0.38	264	0.23	436
C22	Liver	0.22	448	0.11	921
C23-24	Gall Bladder, Bile	0.11	931	0.09	1070
C25	Pancreas	0.13	786	0.09	1142
C26	Other Digestive Organ	0.01	7372	0.00	110743
C30-31	Nose, Sinuses	0.13	769	0.05	1887
C32	Larynx	0.81	124	0.07	1414
C33-34	Lung	0.83	121	0.19	526
C37-38	Mediastinum , Plura	0.02	4278	0.02	4023
C40-41	Bone	0.10	975	0.07	1428
C43	Skin Melanoma	0.02	5243	0.01	16443
C44	Skin Other	0.12	853	0.11	870
C47	Nervous System	0.00	22221	0.00	91143
C48	Retroperitonium	0.01	9417	0.01	8428
C49	Conn & Soft tissue	0.12	865	0.09	1155
C50	Breast	0.15	679	3.00	33
C51-52	Other Female Genital	-	-	0.07	1354
C53	Cervix Uteri	-	-	1.58	63
C54	Corpus Uteri	-	-	0.28	357
C55	Uterus	-	-	0.02	4342
C56	Ovary	-	-	0.57	177
C57-58	Other & Unsp Female Genital	-	-	0.00	57692
C60	Penis	0.15	658	-	-
C61	Prostate	0.39	257	-	-
C62	Testis	0.08	1224	-	-
C64-65	Kidney	0.12	852	0.04	2713
C66-68	Urinary Bladder	0.27	372	0.06	1560
C69	Eye	0.01	16906	0.00	24049
C70-72	Brain	0.23	444	0.17	605

C73	Thyroid	0.06	1607	0.08	1256
C74-75	Other Endocrine gland	0.01	11312	0.01	14027
C76	Other Ill defined site	0.01	9600	0.01	12067
C77	Lymph nodes	0.18	542	0.07	1437
C78	Secondary Resp. & Digest	0.08	1290	0.04	2327
C79	Secondary Other	0.04	2528	0.02	4559
C80	Unknown Primary	0.70	143	0.47	212
C81	Hodgkin's Lymphoma	0.04	2374	0.01	7214
C82,83-85	Non Hodgkin Lymphoma	0.29	342	0.22	454
C88	Immunoprolifer Dis	-	-	0.00	42406
C90	Multiple Myeloma	0.13	765	0.06	1672
C91	Lymphoid Leukemia	0.15	646	0.10	1045
C92	Myeloid Leukemia	0.18	565	0.11	943
C93-95	Other Leukemia	0.05	2055	0.06	1799
<b>Total</b>	<b>All Sites</b>	10.22	10	10.02	10

### Childhood Cancers (00-14 YRS)

Cancer in childhood constitute one of the most important groups of tumors, not only because of the age occurrence, connoting a difference set of etiological factors from those, commonly seen in adult cancers but also because in the past two decades, with advances particularly in chemotherapy, many of the childhood cancers have gain markedly high potency for cure. The proportion of childhood cancers relative to all sites of cancers varies from in male and in females in Nagpur population

Table K gives the number and relative proportion of broad types of childhood cancers in Nagpur registry according to the classification scheme of IARC (Parkin et al 1988). Leukemia's and lymphomas followed closely by tumors of the central nervous systems constitutes the vast majority of childhood cancers.

Site	ICD10	Male		Female		Total	
		#	%	#	%	#	%
Leukemias	C91, C92, C93-C95	68	35.8	58	45.7	126	39.7
Lymphomas	C81, C82-C85	27	14.2	11	8.7	38	12.0
CNS Tumor	C70-C72	21	11.1	15	11.8	36	11.4
Retinoblastoma	C69	5	2.6	3	2.4	8	2.5
Renal Tumor	C64-C65	9	4.7	2	1.6	11	3.5
Hepatic Tumor	C22	1	0.5	1	0.8	2	0.6
Bone Tumor	C40-C41	16	8.4	8	6.3	24	7.6
Soft Tissue	C49	12	6.3	2	1.6	14	4.4
Germ Cell Tumor	C62	2	1.1	0	0.0	2	0.6
Other Carcinomas		29	15.3	27	21.3	56	17.7
All Types		190	100	127	100	317	100

## Tobacco Related Cancers

Sites of cancers that has been associated with use of tobacco (tobacco related cancers- TRC's) includes lip, tongue, oral cavity, pharynx, (including oropharynx and hypopharynx, oesophagus, larynx, lung and urinary bladder).

The total proportions of these sites of cancers to all sites in males and females are given in Table L.

Site	ICD10	Male		Female		Total	
Lip	C00	14	0.3	14	0.3	28	0.3
Tongue	C01-C02	287	6.3	98	2.0	385	4.1
Oral Cavity	C04-C06	319	7.0	105	2.2	424	4.5
Oropharynx	C09-C10	110	2.4	13	0.3	123	1.3
Hypopharynx	C12-C13	143	3.1	34	0.7	177	1.9
Pharynx	C14	17	0.4	8	0.2	25	0.3
Oesophagus	C15	286	6.2	216	4.4	502	5.3
Larynx	C32	302	6.6	31	0.6	333	3.5
Lung	C33-C34	295	6.4	90	1.8	385	4.1
Urinary Bladder	C66-C68	103	2.2	32	0.7	135	1.4
<b>T.R.C.'s</b>		<b>1876</b>	<b>41.0</b>	<b>641</b>	<b>13.2</b>	<b>2517</b>	<b>26.6</b>
Other Carcinomas		2704	59.0	4226	86.8	6930	73.4
All Types		4580	100	4867	100	9447	100

## Mortality

Mortality statistics have an impressive history as useful tool for undertaking epidemiological studies of cancer. The mortality analysis of various occupational groups has provided the evidence, which lead to the discovery of several chemical carcinogens. Examination of time trends of the death rates has in turn lead to the development of new etiologic hypotheses. Furthermore, international comparison of mortality data has been productive in outlining new directions for undertaking epidemiological field studies.

The significant role played by mortality data in epidemiological studies, in the past, was largely due to the unavailability of morbidity data, which is considered more valuable for undertaking epidemiological investigations. Gradually, the role of mortality studies has diminished with the establishment of population based cancer registries in various countries throughout the world and the availability of adequate morbidity data. The value of mortality data has also decreased with the increasing use of epidemiological field studies undertaken to test specific etiologic hypotheses, developed as a result of analysis of mortality statistics.

At our registry, mortality data has been obtained from the death records maintained by the vital statistical division of the Nagpur Municipal Corporation. Copies are made by us of all death certificates, which mention the words 'Cancer' or 'Tumors' as being the cause of death.

During the period 2005-09, a total of 1732 cancer deaths were recorded among the residents of Nagpur City Agglomeration. Out of these 973 were males and 759 were females.



The number of cancer deaths by age and the cause of death for the period 2005-09, are presented in Table 17 and 18 for males and females respectively. The age-specific, crude, age-adjusted and truncated mortality rates are presented in Table 19 and 20, for males and females respectively. The average age-adjusted death rates at all sites, were found to be 19.3 for males and 14.5 for females per 100,000 populations.

The leading sites of cancer deaths, ranked by age-adjusted rates in males and females, are given in Table M. Death from cancer of Leukemias, top the list in males, followed by death from cancer of lung and oesophagus. Death from cancer of breast, top the list in females, followed by death from cancer of cervix and leukemias.

Males				Females			
Rank	ICD10	Site	AA R	Rank	Site		AAR
1	C91-95	Leukemias	1.9	1	C50	Breast	3.0
2	C34	Lung	1.7	2	C53	Cervix	1.2
3	C15	Oesophagus	1.3	3	C91-95	Leukemias	1.1
4	C02	Tongue	0.8	4	C15	Oesophagus	0.7
5	C16	Stomach	0.8	5	C56	Ovary	0.6
6	C22	Liver	0.8	6	C34	Lung	0.5
7	C81-85	Lymphomas	0.8	7	C71	Brain	0.4
8	C61	Prostate	0.7	8	C81-85	Lymphoma	0.4
9	C32	Larynx	0.7	9	C16	Stomach	0.3
10	C90	Multiple Myeloma	0.6	10	C19-21	Rectum	0.3
At All Sites			19.3	At All Sites			14.5

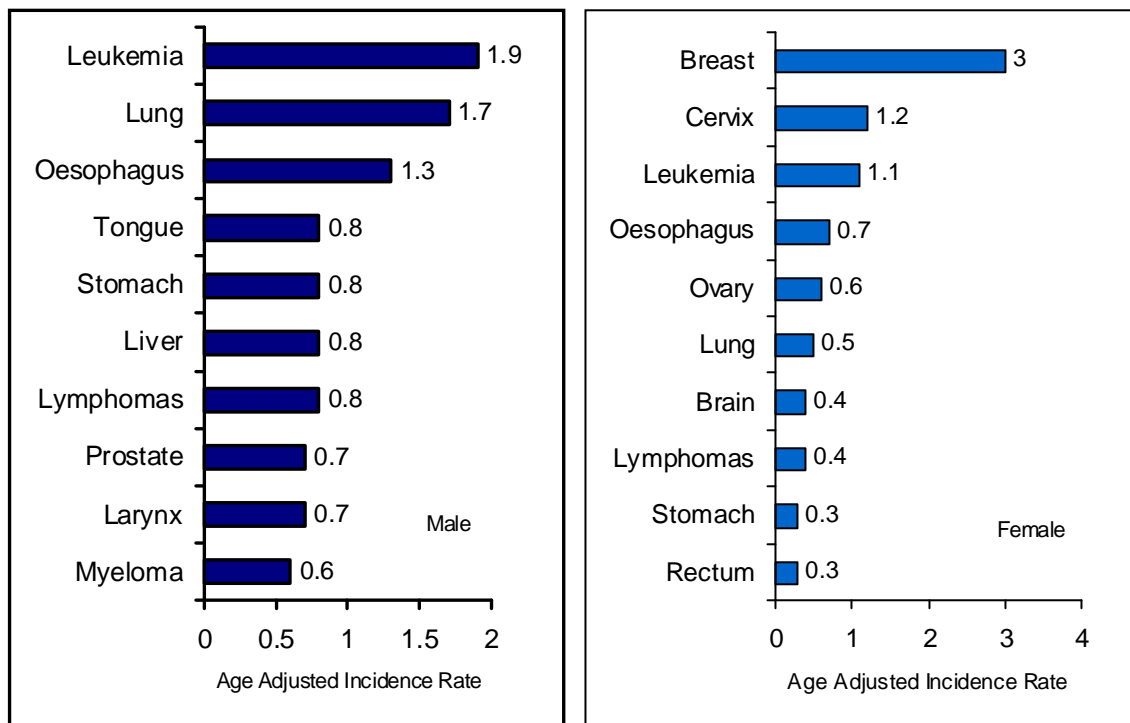


Fig:9: Age Adjusted Incidence Rates per 100,000 Population at Ten Leading Sites, 2005-09.

The age-specific rates were found to follow the general pattern of increase with age. The age-specific death rates for females were found to be generally lower than for males, except in the age-groups 35 to 34 (Table N). This can be explained by the high mortality rates of female genital cancers that occurs in the reproductive age groups (Fig10).

Age Group	Male	Female
00-04	2.4	1.8
05-09	3.0	0.9
10-14	3.7	2.1
15-19	2.6	2.3
20-24	3.3	2.3
25-29	5.3	2.1
30-34	5.9	9.1
35-39	9.6	11.6
40-44	16.7	18.3
45-49	29.9	27.3
50-54	41.7	51.4
55-59	55.0	38.7
60-64	80.4	53.8
65-69	96.6	47.0
70-74	76.2	43.3
75+	88.7	48.2
All Ages	16.0	13.1

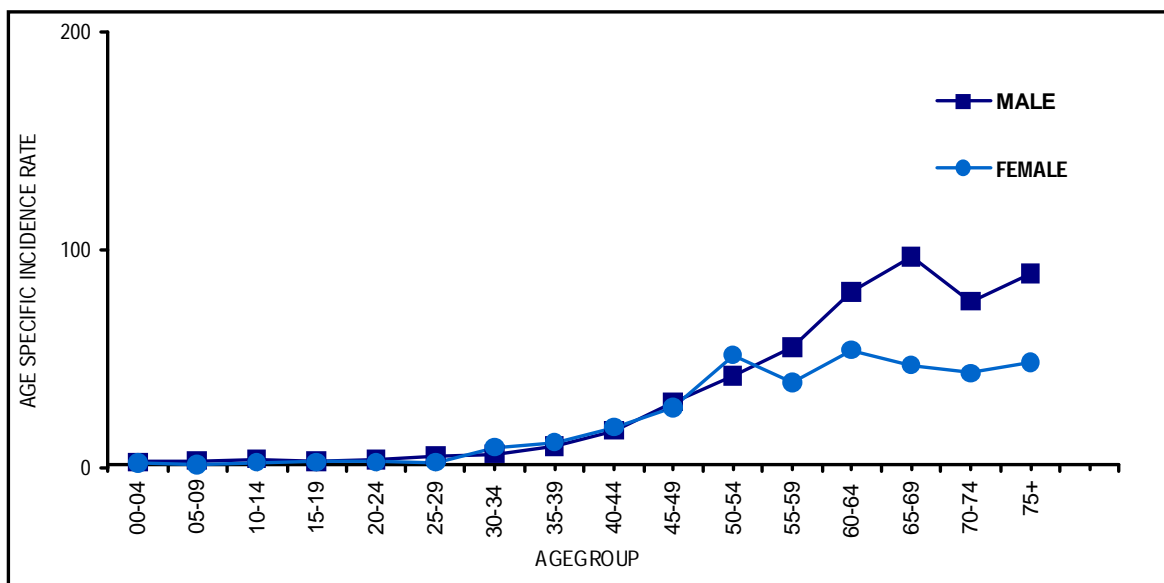


Fig.10 : Age Specific Mortality Rates Per 100,000 Population, For All Cancer Sites, 2005-09.

It is important to determine whether the patterns of age and sex in cancer mortality rates, in fact refers the incidence rates. The relative comparison of the age distribution in the mortality and morbidity analysis and the age distribution of the population by sex, are given in Table O.

Sex	Age	Population	Cancer Cases	Indicator of Relat Freq	Cancer Death	Indicator of Relat Freq
Male	00-14	26.8	4.1	15.2	5.2	19.4
	15-34	38.2	10.8	28.27	10.0	23.8
	35-64	29.8	56.6	189.5	55.4	185.9
	65+	5.1	28.5	558.8	29.1	570.5
Female	00-14	26.13	2.6	9.9	3.2	12.2
	15-34	38.48	12.4	32.2	11.1	28.8
	35-64	29.13	64.5	221.4	61.7	211.8
	65+	6.2	20.3	327.4	23.7	382.2
Total	00-14	26.4	3.3	12.5	4.3	16.2
	15-34	38.3	11.6	30.2	10.5	27.4
	35-64	29.4	60.6	206.1	58.2	197.9
	65+	5.6	24.3	433.9	26.7	476.7

Cancer incidence and mortality rates were found to be very low in the younger age. The association of cancer incidence and mortality with the aging process, is clearly shown by the fact that the percentage of registered cancer cases and the percentage of the total number of deaths occurring in persons 65 years of age and above, are 24.3% and 26.7% respectively, at this group comprises only about 5.6% of the general population. The relative cancer incidence and mortality rates increase with age, in both the sexes.

Table 1: Estimated Resident Population by Age and Sex as on 1<sup>st</sup> July 2007, Nagpur City, Total Population (All Religious Communities)

Age Group	Male		Female		Total	
	#	%	#	%	#	%
00-04	98951	8.1	91143	7.9	190094	8.0
05-09	94010	7.7	88152	7.6	182162	7.7
10-14	133871	11.0	123169	10.6	257040	10.8
15-19	123597	10.1	110743	9.6	234340	9.9
20-24	119815	9.8	115384	10.0	235199	9.9
25-29	114055	9.4	116296	10.0	230351	9.7
30-34	108811	8.9	102943	8.9	211754	8.9
35-39	96004	7.9	94744	8.2	190748	8.0
40-44	84058	6.9	73028	6.3	157086	6.6
45-49	64831	5.9	59392	5.1	124223	5.2
50-54	53665	4.4	42406	3.7	96071	4.0
55-59	35639	2.9	33033	2.9	68672	2.9
60-64	29099	2.4	34579	3.0	63678	2.7
65-69	25463	2.1	32740	2.8	58203	2.4
70-74	19420	1.6	20763	1.8	40183	1.7
75+	17583	1.4	18675	1.6	36258	1.5
Total	1218872	100.0	1157190	100.0	2376062	100.0

Table 2: Estimated Resident Population by Religion and Sex. Nagpur City As on 1<sup>st</sup> July 2007

Religion	Male		Female		Total	
	#	%	#	%	#	%
Hindu	876520	36.88	819918	34.5	1696438	71.4
Muslim	124497	5.24	121118	5.09	245615	10.33
Christian	14248	0.6	11859	0.5	26107	1.09
Buddhist	181760	7.65	183391	7.72	365151	15.36
Jain	9737	0.41	9271	0.39	19008	0.8
Sikh	8550	0.36	8082	0.34	16632	0.7
Others	2372	0.1	2380	0.01	4752	0.2
Unknown	1188	0.05	1171	0.05	2359	0.1
Total	1218872	51.3	1157190	48.7	2376062	100

Table 3: Number of Incident Cases by Source of Registration and Year with Percentage, Male, 2005-09

SOURCE	2005		2006		2007		2008		2009		Total	
	#	%	#	%	#	%	#	%	#	%	#	%
CIIMS	0	0.0	0	0.0	0	0.0	8	0.7	35	3.6	43	0.9
Cancer Care Clinic	0	0.0	0	0.0	0	0.0	23	2.2	29	3.0	52	1.1
Dental MCH	0	0.0	0	0.0	0	0.0	22	2.1	15	1.5	37	0.8
Dr. Lalit Jain	0	0.0	0	0.0	0	0.0	118	11.0	0	0.0	118	2.6
ESIS	8	1.0	0	0.0	1	0.1	0	0.0	0	0.0	9	0.2
KRIMS	0	0.0	0	0.0	0	0.0	1	0.1	4	0.1	5	0.1
Lata Mangeshkar	0	0.0	0	0.0	0	0.0	47	4.4	41	4.2	88	1.9
MAYO	86	10.3	82	10.2	80	9.0	82	7.7	91	9.3	421	9.2
MCH	240	28.6	237	29.5	370	41.6	374	35.0	344	35.1	1565	34.2
MURE	1	0.1	0	0.0	0	0.0	9	0.8	8	0.8	18	0.4
Mumbai Small Hospital	11	1.3	7	0.9	0	0.0	0	0.0	8	0.8	26	0.6
NSRM	0	0.0	0	0.0	1	0.1	3	0.3	0	0.0	4	0.1
Nagpur Small Hospital	134	16.0	149	18.5	4	0.4	52	4.9	36	3.7	375	8.2
Orange City	0	0.0	0	0.0	0	0.0	18	1.7	34	3.5	52	1.1
Other	0	0.0	0	0.0	154	17.3	0	0.0	0	0.0	154	3.4
Panchhel cancer Medical	0	0.0	0	0.0	0	0.0	21	2.0	16	1.6	37	0.8
RST	306	36.5	305	37.9	234	26.3	251	23.5	253	25.8	1349	29.5
Radhakrishnan	0	0.0	0	0.0	0	0.0	8	0.7	2	0.2	10	0.2
TMH	14	1.7	5	0.6	26	2.9	1	0.1	28	2.9	74	1.6
Nagpur Municipal Corporation	38	4.5	19	2.1	20	2.2	30	2.8	36	3.7	143	3.1
Total	838	100	804	100	890	100	1068	100	980	100	4580	100

Table 4: Number of Incident Cases by Source of Registration and Year with Percentage, Female, 2005-09

SOURCE	2005		2006		2007		2008		2009		Total	
	#	%	#	%	#	%	#	%	#	%	#	%
CIIMS	0	0.0	0	0.0	0	0.0	11	0.9	58	5.5	69	1.4
Cancer Care Clinic	0	0.0	0	0.0	0	0.0	46	3.9	55	5.2	101	2.1
Dental MCH	0	0.0	0	0.0	0	0.0	8	0.7	12	1.1	20	0.4
Dr. Lalit Jain	0	0.0	0	0.0	0	0.0	78	6.5	0	0.0	78	1.6
ESIS	4	0.5	1	0.1	1	0.1	0	0.0	0	0.0	6	0.1
KRIMS	0	0.0	0	0.0	0	0.0	4	0.3	6	0.6	10	0.2
Lata Mangeshkar	0	0.0	0	0.0	0	0.0	43	3.6	44	4.2	87	1.8
MAYO	107	13.2	99	11.6	114	11.9	158	13.3	116	11.0	594	12.2
MCH	225	27.8	261	30.6	395	41.1	374	31.4	347	33.0	1602	32.9
MURE	3	0.4	0	0.0	0	0.0	6	0.5	6	0.6	15	0.3
Mumbai Small Hospital	26	3.2	6	0.7	0	0.0	0	0.0	2	0.2	34	0.7
NSRM	0	0.0	0	0.0	2	0.2	3	0.3	0	0.0	5	0.1
Nagpur Small Hospital	86	10.6	118	13.8	0	0.0	62	5.2	33	3.1	299	6.1
Orange City	0	0.0	0	0.0	0	0.0	27	2.3	24	2.3	51	1.0
Other	0	0.0	0	0.0	130	13.5	0	0.0	0	0.0	130	2.7
Panchhel cancer Medical	0	0.0	0	0.0	0	0.0	16	1.3	18	1.7	34	0.7
RST	314	38.8	346	40.6	281	29.3	324	27.2	292	27.7	1557	32.0
Radhakrishnan	0	0.0	0	0.0	0	0.0	9	0.8	1	0.1	10	0.2
TMH	20	2.5	5	0.6	17	1.8	0	0.0	19	1.8	61	1.3
Nagpur Municipal Corporation	25	3.1	17	2.0	20	2.1	22	1.8	20	1.9	104	2.1
Total	810	100	853	100	960	100	1191	100	1053	100	4867	100

Table 5: Number of Incident Cases of Cancer by Site Group and Year of Registration, with percentages, Nagpur City, Male, 2005-09

ICD10/ Site Group	2005		2006		2007		2008		2009		Total	
	#	%	#	%	#	%	#	%	#	%	#	%
C00-C14 LIP, ORAL CAVITY & PHARYNX	192	22.9	167	20.8	185	20.8	301	28.2	248	25.3	1093	23.9
C15-C26 DIGESTIVE ORGANS	158	18.9	164	20.4	192	21.6	202	18.9	220	22.4	936	20.4
C30-C39 RESPIRATORY SYSTEMS	121	14.4	135	16.8	148	16.6	135	12.6	120	12.2	659	14.4
C40-41,C45-C49 BONE&CONN.TISSUE	27	3.2	32	4.0	18	2.0	43	4.0	28	2.9	148	3.2
C43-C44 SKIN	13	1.6	8	1.0	11	1.2	19	1.8	11	1.1	62	1.4
C50 BREAST	20	2.4	14	1.7	13	1.5	10	0.9	17	1.7	74	1.6
C60-C63 MALE GENITAL ORGANS	50	6.0	48	6.0	63	7.1	66	6.2	51	5.2	278	6.1
C64-C68 URINARY ORGANS	30	3.6	30	3.4	28	3.1	35	3.3	33	3.4	156	3.4
C69-C72 EYE & NERVOUS SYSTEMS	29	3.5	25	3.1	28	3.1	28	2.6	32	3.3	142	3.1
C73-C75 THYROID & ENDO.GLAND	7	0.8	8	1.0	11	1.2	8	0.7	4	0.4	38	0.8
C76-C80 LYMPHNODES, SECON,UNSP	86	10.3	84	10.4	83	9.3	108	10.1	113	11.5	474	10.3
C81-C90 LYMPHATIC SYSTEMS	60	7.2	37	4.6	57	6.4	54	5.1	52	5.3	260	5.7
C91-C95 LEUKAEMIAS	45	5.4	52	6.5	53	6.0	59	5.5	51	5.2	260	5.7
Total All Groups	838	100.0	804	100.0	890	100.0	1068	100.0	980	100.0	4580	100.0

Table 6: Number of Incident Cases of Cancer by Site Group and Year of Registration, with percentages, Nagpur City, Female, 2005-09

ICD10 / Site Group	2005		2006		2007		2008		2009		Total	
	#	%	#	%	#	%	#	%	#	%	#	%
C00-C14 LIP, ORAL CAVITY & PHARYNX	65	8.0	77	9.0	65	6.8	83	7.0	91	8.6	381	7.8
C15-C26 DIGESTIVE ORGANS	107	13.2	108	12.7	112	11.7	143	12.0	165	15.7	635	13.0
C30-C39 RESPIRATORY SYSTEMS	24	3.0	35	4.1	30	3.1	33	2.8	38	3.6	160	3.3
C40-41,C45-C49 BONE&CONN.TISSUE	23	2.8	15	1.8	21	2.2	32	2.7	18	1.7	109	2.2
C43-C44 SKIN	3	0.4	5	0.6	11	1.1	25	2.1	14	1.3	58	1.2
C50 BREAST	217	26.8	245	28.7	304	31.7	401	33.7	317	30.1	1484	30.5
C51-C58 FEMALE GENITAL ORGANS	230	28.4	219	25.7	226	23.5	272	22.8	242	23.0	1189	24.4
C64-C68 URINARY ORGANS	9	1.1	11	1.3	14	1.5	10	0.8	7	0.7	51	1.0
C69-C72 EYE & NERVOUS SYSTEMS	12	1.5	20	2.3	26	2.7	25	2.1	19	1.8	102	2.1
C73-C75 THYROID & ENDO.GLAND	8	1.0	10	1.2	11	1.1	17	1.4	8	0.8	54	1.1
C76-C80 LYMPHNODES, SECON,UNSP	55	6.8	61	7.2	63	6.6	73	6.1	61	5.8	313	6.4
C81-C90 LYMPHATIC SYSTEMS	19	2.3	16	1.9	34	3.5	44	3.7	35	3.6	148	3.0
C91-C95 LEUKAEMIAS	38	4.7	31	3.6	43	4.5	33	2.8	38	3.6	183	3.8
Total All Groups	810	100.0	853	100.0	960	100.0	1191	100.0	1053	100.0	4867	100.0

Table 7: Number of Incident Cases of Cancer by Age and Site (ICD-10), with Percentages, Nagpur City, Male, 2005-09

ICD 10	SITE	0	5	10	15	20	25	30	35	40	45	50	55	60	65	70	75	ANS	Total	%
C00	Lip	0	0	0	0	0	0	3	2	4	1	0	1	1	1	0	0	1	14	0.3
C01-02	Tongue	0	1	0	0	2	3	11	19	29	43	40	44	37	27	18	11	2	287	6.3
C03	Gum	0	0	0	1	2	2	6	12	27	20	19	20	18	9	11	7	0	154	3.4
C04-06	Other Mouth	0	0	0	1	4	10	29	36	39	42	40	30	32	23	20	10	3	319	7.0
C07-08	Salivary Gland	0	0	1	0	0	2	3	1	4	0	1	1	4	5	5	1	0	28	0.6
C09-10	Oropharynx	0	0	1	0	3	1	1	1	8	8	19	14	18	12	14	9	1	110	2.4
C11	Nasopharynx	0	1	0	1	1	1	3	1	2	4	1	1	0	2	1	2	0	21	0.5
C12-13	Hypopharynx	1	1	0	1	1	1	1	3	8	11	17	21	32	15	12	18	0	143	3.1
C14	Other Oral	0	0	0	0	1	0	0	0	4	0	2	1	3	3	1	2	0	17	0.4
C15	Oesophagus	0	0	0	0	0	0	3	5	16	17	47	37	44	43	33	38	3	286	6.2
C16	Stomach	0	0	0	1	2	4	2	8	6	12	16	19	33	25	10	8	2	148	3.2
C17	Small Intestine	0	0	0	0	0	0	1	0	0	0	1	0	1	0	0	0	0	3	0.1
C18	Colon	0	0	0	0	4	3	6	7	5	9	19	11	15	24	14	11	4	132	2.9
C19-21	Rectum	0	0	0	3	2	9	6	15	10	15	24	13	22	22	13	14	1	169	3.7
C22	Liver	0	1	0	0	2	2	2	4	10	7	7	16	15	14	5	9	1	95	2.1
C23-24	Gall Bladder	0	0	0	0	0	1	2	1	6	8	2	6	6	7	3	4	2	48	1.0
C25	Pancreas	0	1	0	0	0	0	0	2	6	6	10	5	6	6	6	3	0	51	1.1
C26	Other Dig Org	0	0	0	0	0	0	0	0	0	1	0	0	2	0	1	0	0	4	0.1
C30-31	Nose, Sinuses	1	0	2	0	1	2	2	0	2	5	7	4	7	6	8	2	1	50	1.1
C32	Larynx	0	0	1	0	3	0	4	7	11	31	36	44	58	49	29	27	2	302	6.6
C33-34	Lung	0	0	0	0	0	3	3	9	18	27	39	38	48	61	32	13	4	295	6.4
C37-38	Mediastinum, plura	0	0	0	0	1	0	1	0	3	2	1	1	0	0	2	0	1	12	0.3
C40-41	Bone	5	5	6	8	9	4	3	7	6	3	4	4	3	1	3	0	2	73	1.6
C43	Skin Melanoma	0	0	0	0	0	0	1	0	0	0	0	0	0	2	2	0	0	5	0.1
C44	Skin Others	0	0	1	0	3	0	6	5	4	5	11	6	5	4	4	3	0	57	1.2
C47	Nervous System	0	1	0	0	0	0	0	0	0	0	0	0	1	0	0	0	0	2	0.0
C48	Retroperitonium	0	0	0	0	0	0	0	0	0	1	0	0	0	1	1	0	0	3	0.1
C49	Conn & Soft Tissue	4	4	4	4	5	1	2	7	9	3	4	3	6	5	3	4	2	70	1.5
C50	Breast	0	0	0	1	1	3	3	4	10	8	9	11	7	5	4	7	1	74	1.6
C60	Penis	0	0	0	0	1	0	5	5	6	7	8	5	15	7	3	3	1	66	1.4
C61	Prostate	0	0	0	0	0	0	0	1	2	4	7	13	17	30	30	40	3	147	3.2
C62	Testis	1	1	0	2	9	11	7	14	6	4	3	1	3	2	0	1	0	65	1.4
C64-65	Kidney	4	2	3	1	1	0	1	5	1	9	3	7	6	5	4	1	0	53	1.2
C66-68	Urinary Bladder	0	0	0	0	1	1	1	3	9	7	10	6	11	18	19	17	0	103	2.2
C69	Eye	4	1	0	1	0	0	0	0	0	0	0	0	0	0	0	0	0	6	0.1
C70-72	Brain	5	9	7	5	7	5	16	7	7	13	13	13	4	13	3	5	4	136	3.0
C73	Thyroid	0	0	0	0	2	5	2	1	1	4	4	4	3	3	1	3	0	33	0.7
C74-75	Oth Endocrine Gland	0	0	0	1	0	1	0	0	0	1	0	2	0	0	0	0	0	5	0.1
C76	Oth Ill Def Sites	0	0	0	0	0	0	0	0	1	0	1	0	1	1	0	0	0	4	0.1
C77	Lymphnodes	0	0	0	1	2	1	0	1	9	7	10	9	11	13	5	7	0	76	1.7
C78	Sec Resp & Dig	0	1	0	0	2	1	2	0	5	4	6	2	5	4	2	5	0	39	0.9
C79	Sec Others	0	0	0	0	0	1	0	3	1	1	3	0	3	3	1	3	0	19	0.4
C80	Unknown Primary	2	7	4	5	12	14	17	17	34	26	36	36	39	40	17	29	1	336	7.3
C81	Hodgkins Lymphoma	1	4	2	3	1	1	4	4	3	0	3	0	0	1	2	2	1	32	0.7
C82-85	N.H.Lymphoma	5	6	9	8	7	5	21	14	9	15	19	9	9	12	10	17	3	178	3.9
C90	Multiple Myeloma	0	0	2	0	2	0	4	0	3	3	6	4	6	8	8	4	0	50	1.1
C91	Lymphoid Leukemia	8	20	19	17	13	8	5	3	9	6	6	2	3	5	1	2	1	128	2.8
C92	Myeloid Leukemia	3	4	5	5	3	4	7	6	12	12	11	1	11	6	5	4	0	99	2.2
C93-95	Other Leukemia	3	2	4	1	5	1	2	1	0	3	3	2	2	1	1	2	0	33	0.7
Total		47	72	71	71	115	111	198	241	365	415	528	467	573	544	367	348	47	4580	100.0

Table 8: Number of Incident Cases of Cancer by Age and Site (ICD-10), with Percentages, Nagpur City, Female. 2005-09

ICD10	SITE	0	5	10	15	20	25	30	35	40	45	50	55	60	65	70	75	ANS	Total	%
C00	Lip	0	0	1	0	1	1	1	1	0	1	0	1	2	2	2	0	1	14	0.3
C01-02	Tongue	0	0	0	0	0	0	3	9	12	10	21	7	12	15	6	3	0	98	2.0
C03	Gum	0	0	0	0	0	2	3	5	6	6	10	6	12	14	11	9	1	85	1.7
C04-06	Other Mouth	0	0	0	3	2	4	3	6	15	10	7	16	12	10	11	6	0	105	2.2
C07-08	Salivary Gland	0	0	0	0	1	2	0	3	2	5	0	0	4	0	2	0	0	19	0.4
C09-10	Orophoprarynx	0	0	0	1	0	0	0	0	2	1	3	2	0	1	3	0	0	13	0.3
C11	Nasopharynx	0	0	0	0	1	0	0	0	1	0	1	0	0	1	1	0	0	5	0.1
C12-13	Hypopharynx	0	0	0	0	0	1	3	1	4	2	6	5	3	2	4	3	0	34	0.7
C14	Other Oral	0	0	0	0	0	0	0	0	0	1	2	2	0	1	1	1	0	8	0.2
C15	Oesophagus	0	0	0	0	0	2	7	10	20	22	28	30	28	35	14	17	3	216	4.4
C16	Stomach	0	0	0	1	1	7	6	5	5	7	10	9	13	22	7	1	4	98	2.0
C17	Small Intenstine	0	0	0	0	0	0	0	0	0	2	1	2	0	0	2	0	0	7	0.1
C18	Colon	0	0	0	2	2	2	6	4	5	3	13	13	13	9	9	3	2	86	1.8
C19-21	Rectum	0	0	0	1	4	3	9	6	11	11	11	12	12	11	9	3	2	105	2.2
C22	Liver	1	0	0	1	0	0	0	2	5	4	4	5	6	5	7	4	0	44	0.9
C23-24	Gall Bladder	0	0	0	0	0	0	3	3	5	6	7	3	4	3	5	1	1	41	0.8
C25	Pancreas	0	0	0	1	1	1	0	3	1	1	5	2	7	7	4	3	1	37	0.8
C26	Other Dig Org	0	0	0	1	0	0	0	0	0	0	0	0	0	0	0	0	0	1	0.0
C30-31	Nose, Sinuses	0	0	0	2	1	2	2	2	2	2	5	1	5	3	0	2	0	29	0.6
C32	Larynx	0	0	0	0	2	0	0	1	1	9	2	2	8	1	3	2	0	31	0.6
C33-34	Lung	0	0	1	0	3	0	2	5	9	10	13	8	10	17	3	7	2	90	1.8
C37-38	Mediastinum, plura	0	0	0	0	0	0	0	0	2	0	1	0	2	3	1	1	0	9	0.2
C40-41	Bone	1	4	3	10	3	7	5	1	2	2	2	3	2	1	2	1	0	49	1.0
C43	Skin Melanoma	0	0	0	0	0	0	0	0	0	0	0	1	0	1	0	1	0	3	0.1
C44	Skin Others	0	0	1	0	4	2	6	3	6	4	5	4	6	8	4	2	0	55	1.1
C47	Nervous System	1	0	0	0	0	0	0	0	0	0	0	0	0	0	0	0	0	1	0.0
C48	Retroperitonium	0	0	0	0	0	0	0	0	0	0	0	1	2	1	0	0	0	4	0.1
C49	Conn & Soft Tissue	0	1	1	2	4	4	4	5	10	3	2	3	7	3	1	3	2	55	1.1
C50	Breast	0	1	1	2	20	35	97	159	220	230	212	136	158	115	57	30	11	1484	30.5
C51-52	Oth Fem Gen Org	0	0	0	0	0	0	2	2	2	2	7	1	5	5	3	3	0	32	0.7
C53	Cervix Uteri	0	0	0	0	2	10	37	74	95	94	122	70	95	75	33	30	7	744	15.3
C54	Corpus Uteri	0	0	0	0	1	1	5	1	11	10	19	14	20	17	9	3	0	111	2.3
C55	Uterus	0	0	0	0	0	0	1	1	2	1	2	1	2	1	0	0	0	11	0.2
C56	Ovary	2	0	3	5	13	11	25	23	25	37	31	26	39	24	11	10	4	289	5.9
C57-58	Oth Unsp Fem Gen Org	0	0	0	0	2	0	0	0	0	0	0	0	0	0	0	0	0	2	0.0
C64-65	Kidney	2	0	0	1	0	1	1	1	4	1	1	0	3	1	2	0	1	19	0.4
C66-68	Urinary Bladder	0	0	0	0	1	1	1	1	3	2	3	0	6	3	4	7	0	32	0.7
C69	Eye	3	0	0	0	1	0	0	0	0	0	0	0	0	0	0	0	0	4	0.1
C70-72	Brain	4	5	6	6	5	10	6	4	6	11	5	13	5	5	3	3	1	98	2.0
C73	Thyroid	1	0	1	2	3	5	9	5	2	3	2	3	4	4	2	2	1	49	1.0
C74-75	Oth Endocrine Gland	0	1	0	0	2	0	0	0	1	0	0	0	1	0	0	0	0	5	0.1
C76	Oth Ill Def Sites	0	0	0	0	0	0	1	0	1	0	0	0	1	1	0	0	0	4	0.1
C77	Lymphnodes	0	0	0	2	0	1	2	0	4	1	1	5	7	5	1	3	0	32	0.7
C78	Sec Resp & Dig	0	0	0	0	1	1	0	1	2	0	5	2	3	2	1	3	1	22	0.5
C79	Sec Others	0	0	0	0	0	0	1	0	0	3	3	0	2	1	0	1	0	11	0.2
C80	Unknown Primary	4	1	7	5	12	6	17	17	19	30	32	15	26	28	10	10	5	244	5.0
C81	Hodgkins Lymphoma	0	2	1	2	1	0	1	1	0	0	0	1	0	1	0	0	1	11	0.2
C82-85	N.H.Lymphoma	2	1	5	5	3	4	4	4	5	13	8	9	19	10	7	7	4	110	2.3
C88	Immunoproliferative Dis	0	0	0	0	0	0	0	0	0	0	1	0	0	0	0	0	0	1	0.0
C90	Multiple Myeloma	0	0	1	0	2	0	0	1	1	2	3	4	8	3	0	1	0	26	0.5
C91	Lymphoid Leukemia	16	14	13	6	3	3	4	1	1	3	3	0	3	3	1	2	0	76	1.6
C92	Myeloid Leukemia	3	2	2	3	7	4	8	2	5	11	4	3	7	1	2	2	3	69	1.4
C93-95	Other Leukemia	2	2	4	4	1	5	4	3	0	1	5	2	1	0	2	1	1	38	0.8
Total		42	34	51	68	110	138	289	376	535	577	628	443	585	481	260	191	59	4867	100.0



Table 9: Average Annual Age-Specific, World Age Adjusted, Truncated (35-64) Incidence Rates of Cancer Cases Per 100,000 Persons, Nagpur City, 2005-09, Male.

ICD 10	SITE	0	5	10	15	20	25	30	35	40	45	50	55	60	65	70	75	CR	AAR	TR
C00	Lip	0.0	0.0	0.0	0.0	0.0	0.0	0.6	0.4	1.0	0.3	0.0	0.6	0.7	0.8	0.0	0.0	0.2	0.2	0.4
C01-02	Tongue	0.0	0.2	0.0	0.0	0.3	0.5	2.0	4.0	6.9	13.3	14.9	24.7	25.4	21.2	18.5	12.5	4.7	6.0	14.8
C03	Gum	0.0	0.0	0.0	0.2	0.3	0.4	1.1	2.5	6.4	6.2	7.1	11.2	12.4	7.1	11.3	8.0	2.5	2.9	7.1
C04-06	Other Mouth	0.0	0.0	0.0	0.2	0.7	1.8	5.3	7.5	9.3	13.0	14.9	16.8	22.0	18.1	20.6	11.4	5.2	6.0	13.9
C07-08	Salivary Gland	0.0	0.0	0.1	0.0	0.0	0.4	0.6	0.2	1.0	0.0	0.4	0.6	2.7	3.9	5.1	1.1	0.5	0.5	0.5
C09-10	Oropharynx	0.0	0.0	0.1	0.0	0.5	0.2	0.2	0.2	1.9	2.5	7.1	7.9	12.4	9.4	14.4	10.2	1.8	2.3	4.7
C11	Nasopharynx	0.0	0.2	0.0	0.2	0.2	0.2	0.6	0.2	0.5	1.2	0.4	0.6	0.0	1.6	1.0	2.3	0.3	0.4	0.7
C12-13	Hypopharynx	0.2	0.2	0.0	0.2	0.2	0.2	0.6	1.9	3.4	6.3	11.8	22.0	11.8	12.4	20.5	2.3	2.3	3.2	6.8
C14	Other Oral	0.0	0.0	0.0	0.0	0.2	0.0	0.0	0.0	1.0	0.0	0.7	0.6	2.1	2.4	1.0	2.3	0.3	0.3	0.5
C15	Oesophagus	0.0	0.0	0.0	0.0	0.0	0.0	0.6	1.0	3.8	5.2	17.5	20.8	30.2	33.8	34.0	43.2	4.7	6.2	11.6
C16	Stomach	0.0	0.0	0.0	0.2	0.3	0.7	0.4	1.7	1.4	3.7	6.0	10.7	22.7	19.6	10.3	9.1	2.4	3.3	7.0
C17	Small Intenstine	0.0	0.0	0.0	0.0	0.0	0.0	0.2	0.0	0.0	0.0	0.4	0.0	0.7	0.0	0.0	0.0	0.0	0.1	0.1
C18	Colon	0.0	0.0	0.0	0.0	0.7	0.5	1.1	1.5	1.2	2.8	7.1	6.2	10.3	18.9	14.4	12.5	2.2	2.7	4.6
C19-21	Rectum	0.0	0.0	0.0	0.5	0.3	1.6	1.1	3.1	2.4	4.6	8.9	7.3	15.1	17.3	13.4	15.9	2.8	3.5	6.7
C22	Liver	0.0	0.2	0.0	0.0	0.3	0.4	0.4	0.8	2.4	2.2	2.6	9.0	10.3	11.0	5.1	10.2	1.6	1.9	3.9
C23-24	Gall Bladder	0.0	0.0	0.0	0.0	0.0	0.2	0.4	0.2	1.4	2.5	0.7	3.4	4.1	5.5	3.1	4.5	0.8	1.0	2.1
C25	Pancreas	0.0	0.2	0.0	0.0	0.0	0.0	0.0	0.4	1.4	1.9	3.7	2.8	4.1	4.7	6.2	3.4	0.8	1.1	2.3
C26	Other Dig Org	0.0	0.0	0.0	0.0	0.0	0.0	0.0	0.0	0.0	0.3	0.0	0.0	1.4	0.0	1.0	0.0	0.1	0.1	0.3
C30-31	Nose, Sinuses	0.2	0.0	0.3	0.0	0.2	0.4	0.4	0.0	0.5	1.5	2.6	2.2	4.8	4.7	8.2	2.3	0.8	1.1	1.9
C32	Larynx	0.0	0.0	0.1	0.0	0.5	0.0	0.7	1.5	2.6	9.6	13.4	24.7	39.9	38.5	29.9	30.7	5.0	7.0	14.5
C33-34	Lung	0.0	0.0	0.0	0.0	0.0	0.5	0.6	1.9	4.3	8.3	14.5	21.3	33.0	47.9	33.0	14.8	4.8	6.5	12.9
C37-38	Mediastinum, plura	0.0	0.0	0.0	0.0	0.2	0.0	0.2	0.0	0.7	0.6	0.4	0.6	0.0	0.0	2.1	0.0	0.2	0.2	0.4
C40-41	Bone	1.0	1.1	0.9	1.3	1.5	0.7	0.6	1.5	1.4	0.9	1.5	2.2	2.1	0.8	3.1	0.0	1.2	1.2	1.4
C43	Skin Melanoma	0.0	0.0	0.0	0.0	0.0	0.0	0.2	0.0	0.0	0.0	0.0	0.0	0.0	1.6	2.1	0.0	0.1	0.1	0.0
C44	Skin Others	0.0	0.0	0.1	0.0	0.5	0.0	1.1	1.0	1.0	1.5	4.1	3.4	3.4	3.1	4.1	3.4	0.9	1.1	2.3
C47	Nervous System	0.0	0.2	0.0	0.0	0.0	0.0	0.0	0.0	0.0	0.0	0.0	0.0	0.7	0.0	0.0	0.0	0.0	0.0	0.1
C48	Retroperitonium	0.0	0.0	0.0	0.0	0.0	0.0	0.0	0.0	0.0	0.3	0.0	0.0	0.0	0.8	1.0	0.0	0.0	0.1	0.1
C49	Conn & Soft Tissue	0.8	0.9	0.6	0.6	0.8	0.2	0.4	1.5	2.1	0.9	1.5	1.7	4.1	3.9	3.1	4.5	1.1	1.2	1.6
C50	Breast	0.0	0.0	0.0	0.2	0.2	0.5	0.6	0.8	2.4	2.5	3.4	6.2	4.8	3.9	4.1	8.0	1.2	1.4	3.1
C60	Penis	0.0	0.0	0.0	0.0	0.2	0.0	0.9	1.0	1.4	2.2	3.0	2.8	10.3	5.5	3.1	3.4	1.1	1.4	3.2
C61	Prostate	0.0	0.0	0.0	0.0	0.0	0.0	0.0	0.2	0.5	1.2	2.6	7.3	11.7	23.6	30.9	45.5	2.4	3.3	3.4
C62	Testis	0.2	0.2	0.0	0.3	1.5	1.9	1.3	2.9	1.4	1.2	1.1	0.6	2.1	1.6	0.0	1.1	1.1	1.0	1.6
C64-65	Kidney	0.8	0.4	0.4	0.2	0.2	0.0	0.2	1.0	0.2	2.8	1.1	3.9	4.1	3.9	4.1	1.1	0.9	1.2	2.5
C66-68	Urinary Bladder	0.0	0.0	0.0	0.0	0.2	0.2	0.2	0.6	2.1	2.2	3.7	3.4	7.6	14.1	19.6	19.3	1.7	2.2	3.0
C69	Eye	0.8	0.2	0.0	0.2	0.0	0.0	0.0	0.0	0.0	0.0	0.0	0.0	0.0	0.0	0.0	0.0	0.1	0.1	0.0
C70-72	Brain	1.0	1.9	1.0	0.8	1.2	0.9	2.9	1.5	1.7	4.0	4.8	7.3	2.7	10.2	3.1	5.7	2.2	2.5	3.9
C73	Thyroid	0.0	0.0	0.0	0.0	0.3	0.9	0.4	0.2	0.2	1.2	1.5	2.2	2.1	2.4	1.0	3.4	0.5	0.7	1.3
C74-75	Oth Endocrine Gland	0.0	0.0	0.0	0.2	0.0	0.2	0.0	0.0	0.0	0.3	0.0	1.1	0.0	0.0	0.0	0.0	0.1	0.1	0.3
C76	Oth Ill Def Sites	0.0	0.0	0.0	0.0	0.0	0.0	0.0	0.0	0.2	0.0	0.4	0.0	0.7	0.8	0.0	0.0	0.1	0.1	0.1
C77	Lymphnodes	0.0	0.0	0.0	0.2	0.3	0.2	0.0	0.2	2.1	2.2	3.7	5.1	7.6	10.2	5.1	8.0	1.2	1.6	3.1
C78	Sec Resp & Dig	0.0	0.2	0.0	0.0	0.3	0.2	0.4	0.0	1.2	1.2	2.2	1.1	3.4	3.1	2.1	5.7	0.6	0.8	1.4
C79	Sec Others	0.0	0.0	0.0	0.0	0.0	0.2	0.0	0.6	0.2	0.3	1.1	0.0	2.1	2.4	1.0	3.4	0.3	0.4	0.7
C80	Unknown Primary	0.4	1.5	0.6	0.8	2.0	2.5	3.1	3.5	8.1	8.0	13.4	20.2	26.8	31.4	17.5	33.0	5.5	6.5	12.0
C81	Hodgkins Lymphoma	0.2	0.9	0.3	0.5	0.2	0.2	0.7	0.8	0.7	0.0	1.1	0.0	0.0	0.8	2.1	2.3	0.5	0.5	0.3
C82-85	N.H.Lymphoma	1.0	1.3	1.3	1.3	1.2	0.9	3.9	2.9	2.1	4.6	7.1	5.1	6.2	9.4	10.3	19.3	2.9	3.3	4.9
C90	Multiple Myeloma	0.0	0.0	0.3	0.0	0.3	0.0	0.7	0.0	0.7	0.9	2.2	2.2	4.1	6.3	8.2	4.5	0.8	1.0	1.5
C91	Lymphoid Leukemia	1.6	4.3	2.8	2.8	2.2	1.4	0.9	0.6	2.1	1.9	2.2	1.1	2.1	3.9	1.0	2.3	2.1	2.1	1.6
C92	Myeloid Leukemia	0.6	0.9	0.7	0.8	0.5	0.7	1.3	1.2	2.9	3.7	4.1	0.6	7.6	4.7	5.1	4.5	1.6	1.9	3.4
C93-95	Other Leukemia	0.6	0.4	0.6	0.2	0.8	0.2	0.4	0.2	0.0	0.9	1.1	1.1	1.4	0.8	1.0	2.3	0.5	0.7	0.9
Total		9.5	15.3	10.6	11.5	19.2	19.5	36.4	50.2	86.8	128.0	196.8	262.1	393.8	427.3	378.0	395.8	75.2	92.7	175.6

Table 10: Average Annual Age-Specific, World Age Adjusted, Truncated (35-64) Incidence Rates of Cancer Cases Per 100,000 Persons, Nagpur City, 2005-09, Female.

ICD10	SITE	0	5	10	15	20	25	30	35	40	45	50	55	60	65	70	75	CR	AAR	TR
C00	Lip	0.0	0.0	0.2	0.0	0.2	0.2	0.2	0.2	0.0	0.3	0.0	0.6	1.2	1.2	1.9	0.0	0.2	0.3	0.4
C01-02	Tongue	0.0	0.0	0.0	0.0	0.0	0.0	0.6	1.9	3.3	3.4	9.9	4.2	6.9	9.2	5.8	3.2	1.7	2.0	4.7
C03	Gum	0.0	0.0	0.0	0.0	0.0	0.3	0.6	1.1	1.6	2.0	4.7	3.6	6.9	8.6	10.6	9.6	1.5	1.7	3.1
C04-06	Other Mouth	0.0	0.0	0.0	0.5	0.3	0.7	0.6	1.3	4.1	3.4	3.3	9.7	6.9	6.1	10.6	6.4	1.8	2.0	4.2
C07-08	Salivary Gland	0.0	0.0	0.0	0.0	0.2	0.3	0.0	0.6	0.5	1.7	0.0	0.0	2.3	0.0	1.9	0.0	0.3	0.4	1.1
C09-10	Orophoprarynx	0.0	0.0	0.0	0.2	0.0	0.0	0.0	0.0	0.5	0.3	1.4	1.2	0.0	0.6	2.9	0.0	0.2	0.3	0.5
C11	Nasopharynx	0.0	0.0	0.0	0.0	0.2	0.0	0.0	0.0	0.3	0.0	0.5	0.0	0.0	0.6	1.0	0.0	0.1	0.1	0.1
C12-13	Hypopharynx	0.0	0.0	0.0	0.0	0.0	0.2	0.6	0.2	1.1	0.7	2.8	3.0	1.7	1.2	3.9	3.2	0.6	0.7	1.4
C14	Other Oral	0.0	0.0	0.0	0.0	0.0	0.0	0.0	0.0	0.0	0.3	0.9	1.2	0.0	0.6	1.0	1.1	0.1	0.2	0.4
C15	Oesophagus	0.0	0.0	0.0	0.0	0.0	0.3	1.4	2.1	5.5	7.4	13.2	18.2	16.2	21.4	13.5	18.2	3.7	4.4	9.8
C16	Stomach	0.0	0.0	0.0	0.2	0.2	1.2	1.2	1.1	1.4	2.4	4.7	5.4	7.5	13.4	6.7	1.1	1.7	1.9	3.6
C17	Small Intenstine	0.0	0.0	0.0	0.0	0.0	0.0	0.0	0.0	0.0	0.7	0.5	1.2	0.0	0.0	1.9	0.0	0.1	0.2	0.5
C18	Colon	0.0	0.0	0.0	0.4	0.3	0.3	1.2	0.8	1.4	1.0	6.1	7.9	7.5	5.5	8.7	3.2	1.5	1.7	3.5
C19-21	Rectum	0.0	0.0	0.0	0.2	0.7	0.5	1.7	1.3	3.0	3.7	5.2	7.3	6.9	6.7	8.7	3.2	1.8	2.0	4.3
C22	Liver	0.2	0.0	0.0	0.2	0.0	0.0	0.0	0.4	1.4	1.3	1.9	3.0	3.5	3.1	6.7	4.3	0.8	0.9	1.7
C23-24	Gall Bladder	0.0	0.0	0.0	0.0	0.0	0.0	0.6	0.6	1.4	2.0	3.3	1.8	2.3	1.8	4.8	1.1	0.7	0.8	2.0
C25	Pancreas	0.0	0.0	0.0	0.2	0.2	0.2	0.0	0.6	0.3	0.3	2.4	1.2	4.0	4.3	3.9	3.2	0.6	0.7	1.3
C26	Other Dig Org	0.0	0.0	0.0	0.2	0.0	0.0	0.0	0.0	0.0	0.0	0.0	0.0	0.0	0.0	0.0	0.0	0.0	0.0	0.0
C30-31	Nose, Sinuses	0.0	0.0	0.0	0.4	0.2	0.3	0.4	0.4	0.5	0.7	2.4	0.6	2.9	1.8	0.0	2.1	0.5	0.6	1.2
C32	Larynx	0.0	0.0	0.0	0.0	0.3	0.0	0.0	0.2	0.3	3.0	0.9	1.2	4.6	0.6	2.9	2.1	0.5	0.8	2.1
C33-34	Lung	0.0	0.0	0.2	0.0	0.5	0.0	0.4	1.1	2.5	3.4	6.1	4.8	5.8	10.4	2.9	7.5	1.6	1.8	3.9
C37-38	Mediastinum, plura	0.0	0.0	0.0	0.0	0.0	0.0	0.0	0.0	0.5	0.0	0.5	0.0	1.2	1.8	1.0	1.1	0.2	0.2	0.2
C40-41	Bone	0.2	0.9	0.5	1.8	0.5	1.2	1.0	0.2	0.5	0.7	0.9	1.8	1.2	0.6	1.9	1.1	0.8	0.9	0.8
C43	Skin Melanoma	0.0	0.0	0.0	0.0	0.0	0.0	0.0	0.0	0.0	0.0	0.0	0.6	0.0	0.6	0.0	1.1	0.1	0.1	0.1
C44	Skin Others	0.0	0.0	0.2	0.0	0.7	0.3	1.2	0.6	1.6	1.3	2.4	2.4	3.5	4.9	3.9	2.1	1.0	1.0	1.8
C47	Nervous System	0.2	0.0	0.0	0.0	0.0	0.0	0.0	0.0	0.0	0.0	0.0	0.0	0.0	0.0	0.0	0.0	0.0	0.0	0.0
C48	Retroperitonium	0.0	0.0	0.0	0.0	0.0	0.0	0.0	0.0	0.0	0.0	0.0	0.6	1.2	0.6	0.0	0.0	0.1	0.1	0.2
C49	Conn & Soft Tissue	0.0	0.2	0.2	0.4	0.7	0.7	0.8	1.1	2.7	1.0	0.9	1.8	4.0	1.8	1.0	3.2	1.0	0.8	1.5
C50	Breast	0.0	0.2	0.2	0.4	3.5	6.0	18.8	33.6	60.3	77.5	100.0	82.3	91.4	70.3	54.9	32.1	25.6	29.1	75.0
C51-52	Oth Fem Gen Org	0.0	0.0	0.0	0.0	0.0	0.0	0.4	0.4	0.5	0.7	3.3	0.6	2.9	3.1	2.9	3.2	0.6	0.6	1.3
C53	Cervix Uteri	0.0	0.0	0.0	0.0	0.3	1.7	7.2	15.6	26.0	31.7	57.5	42.4	54.9	45.8	31.8	32.1	12.9	14.8	37.1
C54	Corpus Uteri	0.0	0.0	0.0	0.0	0.2	0.2	1.0	0.2	3.0	3.4	9.0	8.5	11.6	10.4	8.7	3.2	1.9	2.3	5.4
C55	Uterus	0.0	0.0	0.0	0.0	0.0	0.0	0.2	0.2	0.5	0.3	0.9	0.6	1.2	0.6	0.0	0.0	0.2	0.2	0.6
C56	Ovary	0.4	0.0	0.5	0.9	2.3	1.9	4.9	4.9	6.8	12.5	14.6	15.7	22.6	14.7	10.6	10.7	5.0	5.7	13.1
C57-58	Oth Unsp Fem Gen Org	0.0	0.0	0.0	0.0	0.3	0.0	0.0	0.0	0.0	0.0	0.0	0.0	0.0	0.0	0.0	0.0	0.0	0.0	0.0
C64-65	Kidney	0.4	0.0	0.0	0.2	0.0	0.2	0.2	0.2	1.1	0.3	0.5	0.0	1.7	0.6	1.9	0.0	0.3	0.3	0.5
C66-68	Urinary Bladder	0.0	0.0	0.0	0.0	0.2	0.2	0.2	0.2	0.8	0.7	1.4	0.0	3.5	1.8	3.9	7.5	0.6	0.6	1.0
C69	Eye	0.7	0.0	0.0	0.0	0.2	0.0	0.0	0.0	0.0	0.0	0.0	0.0	0.0	0.0	0.0	0.0	0.1	0.1	0.0
C70-72	Brain	0.9	1.1	1.0	1.1	0.9	1.7	1.2	0.8	1.6	3.7	2.4	7.9	2.9	3.1	2.9	3.2	1.7	1.9	3.4
C73	Thyroid	0.2	0.0	0.2	0.4	0.5	0.9	1.7	1.1	0.5	1.0	0.9	1.8	2.3	2.4	1.9	2.1	0.8	0.8	1.3
C74-75	Oth Endocrine Gland	0.0	0.2	0.0	0.0	0.3	0.0	0.0	0.0	0.3	0.0	0.0	0.0	0.6	0.0	0.0	0.0	0.1	0.1	0.1
C76	Oth Ill Def Sites	0.0	0.0	0.0	0.0	0.0	0.0	0.2	0.0	0.3	0.0	0.0	0.0	0.6	0.6	0.0	0.0	0.1	0.1	0.1
C77	Lymphnodes	0.0	0.0	0.0	0.4	0.0	0.2	0.4	0.0	1.1	0.3	0.5	3.0	4.0	3.1	1.0	3.2	0.6	0.6	1.1
C78	Sec Resp & Dig	0.0	0.0	0.0	0.0	0.2	0.2	0.0	0.2	0.5	0.0	2.4	1.2	1.7	1.2	1.0	3.2	0.4	0.4	0.8
C79	Sec Others	0.0	0.0	0.0	0.0	0.0	0.0	0.2	0.0	0.0	1.0	1.4	0.0	1.2	0.6	0.0	1.1	0.2	0.3	0.8
C80	Unknown Primary	0.9	0.2	1.1	0.9	2.1	1.0	3.3	3.6	5.2	10.1	15.1	9.1	15.0	17.1	9.6	10.7	4.2	4.8	10.2
C81	Hodgkins Lymphoma	0.0	0.5	0.2	0.4	0.2	0.0	0.2	0.2	0.0	0.0	0.0	0.6	0.0	0.6	0.0	0.0	0.2	0.2	0.1
C82-85	N.H.Lymphoma	0.4	0.2	0.8	0.9	0.5	0.7	0.8	0.8	1.4	4.4	3.8	5.4	11.0	6.1	6.7	7.5	1.9	2.3	4.6
C88	Immunoproliferative Dis.	0.0	0.0	0.0	0.0	0.0	0.0	0.0	0.0	0.0	0.0	0.5	0.0	0.0	0.0	0.0	0.0	0.0	0.0	0.1
C90	Multiple Myeloma	0.0	0.0	0.2	0.0	0.3	0.0	0.0	0.2	0.3	0.7	1.4	2.4	4.6	1.8	0.0	1.1	0.4	0.6	1.4
C91	Lymphoid Leukemia	3.5	3.2	2.1	1.1	0.5	0.5	0.8	0.2	0.3	1.0	1.4	0.0	1.7	1.8	1.0	2.1	1.3	1.5	0.9
C92	Myeloid Leukemia	0.7	0.5	0.3	0.5	1.2	0.7	1.6	0.4	1.4	3.7	1.9	1.8	4.0	0.6	1.9	2.1	1.2	1.3	2.6
C93-95	Other Leukemia	0.4	0.5	0.6	0.7	0.2	0.9	0.8	0.6	0.0	0.3	2.4	1.2	0.6	0.0	1.9	1.1	0.7	0.7	0.9
Total		9.2	7.7	8.3	12.3	19.1	23.7	56.1	79.4	146.5	194.3	296.2	268.2	338.4	293.8	250.4	204.6	84.1	95.6	216.6

Table 11: Incident Cases of cancer by Most valid Basis of Diagnosis and Site (ICD10) with Percentages, Nagpur City, 2005-09, Male.

ICD10	SITE	Microscopic		Clinical		Clin.Invst.		D.C.O.		Total	
		#	%	#	%	#	%	#	%	#	%
C00	Lip	12	85.7	2	14.3	0	0.0	0	0.0	14	100.0
C01-02	Tongue	269	93.7	14	4.9	4	1.4	0	0.0	287	100.0
C03	Gum	148	96.1	6	3.9	0	0.0	0	0.0	154	100.0
C04-06	Other Mouth	305	95.6	12	3.8	2	0.6	0	0.0	319	100.0
C07-08	Salivary Gland	21	75.0	5	17.9	2	7.1	0	0.0	28	100.0
C09-10	Orophoprarynx	106	96.4	4	3.6	0	0.0	0	0.0	110	100.0
C11	Nasopharynx	20	95.2	1	4.8	0	0.0	0	0.0	21	100.0
C12-13	Hypopharynx	132	92.3	7	4.9	4	2.8	0	0.0	143	100.0
C14	Other Oral	16	94.1	1	5.9	0	0.0	0	0.0	17	100.0
C15	Oesophagus	261	91.3	17	5.9	8	2.8	0	0.0	286	100.0
C16	Stomach	136	91.9	9	6.1	3	2.0	0	0.0	148	100.0
C17	Small Intenstine	1	33.3	1	33.3	1	33.3	0	0.0	3	100.0
C18	Colon	114	86.4	9	6.8	9	6.8	0	0.0	132	100.0
C19-21	Rectum	156	92.3	8	4.7	4	2.4	1	0.6	169	100.0
C22	Liver	91	95.8	0	0.0	4	4.2	0	0.0	95	100.0
C23-24	Gall Bladder	40	83.3	3	6.3	5	10.4	0	0.0	48	100.0
C25	Pancreas	42	82.4	5	9.8	4	7.8	0	0.0	51	100.0
C26	Other Dig Org	3	75.0	0	0.0	1	25.0	0	0.0	4	100.0
C30-31	Nose, Sinuses	47	94.0	2	4.0	1	2.0	0	0.0	50	100.0
C32	Larynx	275	91.1	21	7.0	6	2.0	0	0.0	302	100.0
C33-34	Lung	250	84.7	20	6.8	25	8.5	0	0.0	295	100.0
C37-38	Mediastinum, plura	7	58.3	3	25.0	2	16.7	0	0.0	12	100.0
C40-41	Bone	61	83.6	1	1.4	11	15.1	0	0.0	73	100.0
C43	Skin Melanoma	5	100.0	0	0.0	0	0.0	0	0.0	5	100.0
C44	Skin Others	56	98.2	0	0.0	1	1.8	0	0.0	57	100.0
C47	Nervous System	2	100.0	0	0.0	0	0.0	0	0.0	2	100.0
C48	Retroperitonium	3	100.0	0	0.0	0	0.0	0	0.0	3	100.0
C49	Conn & Soft Tissue	68	97.1	2	2.9	0	0.0	0	0.0	70	100.0
C50	Breast	70	94.6	3	4.1	1	1.4	0	0.0	74	100.0
C60	Penis	62	93.9	1	1.5	3	4.5	0	0.0	66	100.0
C61	Prostate	139	94.6	8	5.4	0	0.0	0	0.0	147	100.0
C62	Testis	59	90.8	2	3.1	4	6.2	0	0.0	65	100.0
C64-65	Kidney	51	96.2	1	1.9	1	1.9	0	0.0	53	100.0
C66-68	Urinary Bladder	87	84.5	11	10.7	5	4.9	0	0.0	103	100.0
C69	Eye	6	100.0	0	0.0	0	0.0	0	0.0	6	100.0
C70-72	Brain	125	91.9	7	5.1	3	2.2	1	0.7	136	100.0
C73	Thyroid	28	84.8	3	9.1	1	3.0	1	3.0	33	100.0
C74-75	Oth Endocrine Gland	5	100.0	0	0.0	0	0.0	0	0.0	5	100.0
C76	Oth Ill Def Sites	2	50.0	0	0.0	2	50.0	0	0.0	4	100.0
C77	Lymphnodes	69	90.8	7	9.2	0	0.0	0	0.0	76	100.0
C78	Sec Resp & Dig	37	94.9	2	5.1	0	0.0	0	0.0	39	100.0
C79	Sec Others	19	100.0	0	0.0	0	0.0	0	0.0	19	100.0
C80	Unknown Primary	121	36.0	75	22.3	1	0.3	139	41.4	336	100.0
C81	Hodgkins Lymphoma	32	100.0	0	0.0	0	0.0	0	0.0	32	100.0
C82-85	N.H.Lymphoma	178	100.0	0	0.0	0	0.0	0	0.0	178	100.0
C90	Multiple Myeloma	49	98.0	1	2.0	0	0.0	0	0.0	50	100.0
C91	Lymphoid Leukemia	128	100.0	0	0.0	0	0.0	0	0.0	128	100.0
C92	Myeloid Leukemia	99	100.0	0	0.0	0	0.0	0	0.0	99	100.0
C93-95	Other Leukemia	33	100.0	0	0.0	0	0.0	0	0.0	33	100.0
Total		4046	88.3	274	6.0	118	2.6	142	3.1	4580	100.0

Table 12: Incident Cases of cancer by Most valid Basis of Diagnosis and Site (ICD10) with Percentages, Nagpur City, 2005-09, Female.

ICD10	SITE	Microscopic		Clinical		Clin.Invst.		D.C.O.		Total	
		#	%	#	%	#	%	#	%	#	%
C00	Lip	10	71.4	3	21.4	1	7.1	0	0	14	100
C01-02	Tongue	88	89.8	8	8.2	2	2.0	0	0	98	100
C03	Gum	79	92.9	6	7.1	0	0.0	0	0	85	100
C04-06	Other Mouth	97	92.4	6	5.7	2	1.9	0	0	105	100
C07-08	Salivary Gland	18	94.7	1	5.3	0	0.0	0	0	19	100
C09-10	Orophoprarynx	13	100.0	0	0.0	0	0.0	0	0	13	100
C11	Nasopharynx	4	80.0	1	20.0	0	0.0	0	0	5	100
C12-13	Hypopharynx	32	94.1	2	5.9	0	0.0	0	0	34	100
C14	Other Oral	6	75.0	2	25.0	0	0.0	0	0	8	100
C15	Oesophagus	195	90.3	16	7.4	5	2.3	0	0	216	100
C16	Stomach	94	95.9	4	4.1	0	0.0	0	0	98	100
C17	Small Intenstine	5	71.4	2	28.6	0	0.0	0	0	7	100
C18	Colon	77	89.5	6	7.0	3	3.5	0	0	86	100
C19-21	Rectum	98	93.3	6	5.7	1	1.0	0	0	105	100
C22	Liver	43	97.7	0	0.0	1	2.3	0	0	44	100
C23-24	Gall Bladder	36	87.8	2	4.9	3	7.3	0	0	41	100
C25	Pancreas	34	91.9	2	5.4	1	2.7	0	0	37	100
C26	Other Dig Org	1	100.0	0	0.0	0	0.0	0	0	1	100
C30-31	Nose, Sinuses	23	79.3	2	6.9	4	13.8	0	0	29	100
C32	Larynx	31	100.0	0	0.0	0	0.0	0	0	31	100
C33-34	Lung	73	81.1	9	10.0	8	8.9	0	0	90	100
C37-38	Mediastinum, plura	7	70.0	0	0.0	3	30.0	0	0	10	100
C40-41	Bone	44	89.8	0	0.0	5	10.2	0	0	49	100
C43	Skin Melanoma	3	100.0	0	0.0	0	0.0	0	0	3	100
C44	Skin Others	55	100.0	0	0.0	0	0.0	0	0	55	100
C47	Nervous System	0	0.0	0	0.0	1	100.0	0	0	1	100
C48	Retroperitonium	2	50.0	1	25.0	1	25.0	0	0	4	100
C49	Conn & Soft Tissue	54	98.2	0	0.0	1	1.8	0	0	55	100
C50	Breast	1430	96.4	48	3.2	6	0.4	0	0	1484	100
C51-52	Oth Fem Gen Org	29	90.6	1	3.1	2	6.3	0	0	32	100
C53	Cervix Uteri	707	95.0	31	4.2	6	0.8	0	0	744	100
C54	Corpus Uteri	102	91.9	7	6.3	2	1.8	0	0	111	100
C55	Uterus	8	72.7	2	18.2	1	9.1	0	0	11	100
C56	Ovary	207	71.6	40	13.8	42	14.5	0	0	289	100
C57-58	Oth Unsp Fem Gen Org	2	100.0	0	0.0	0	0.0	0	0	2	100
C64-65	Kidney	19	100.0	0	0.0	0	0.0	0	0	19	100
C66-68	Urinary Bladder	28	87.5	3	9.4	1	3.1	0	0	32	100
C69	Eye	3	75.0	1	25.0	0	0.0	0	0	4	100
C70-72	Brain	92	93.9	5	5.1	1	1.0	0	0	98	100
C73	Thyroid	39	79.6	7	14.3	3	6.1	0	0	49	100
C74-75	Oth Endocrine Gland	4	80.0	1	20.0	0	0.0	0	0	5	100
C76	Oth Ill Def Sites	3	75.0	1	25.0	0	0.0	0	0	4	100
C77	Lymphnodes	29	90.6	3	9.4	0	0.0	0	0	32	100
C78	Sec Resp & Dig	17	77.3	4	18.2	1	4.5	0	0	22	100
C79	Sec Others	10	90.9	1	9.1	0	0.0	0	0	11	100
C80	Unknown Primary	84	34.4	54	22.1	3	1.2	103	42.2	244	100
C81	Hodgkins Lymphoma	11	100.0	0	0.0	0	0.0	0	0	11	100
C82-85	N.H.Lymphoma	110	100.0	0	0.0	0	0.0	0	0	110	100
C88	Immunoproliferative Disease	1	100.0	0	0.0	0	0.0	0	0	1	100
C90	Multiple Myeloma	26	100.0	0	0.0	0	0.0	0	0	26	100
C91	Lymphoid Leukemia	76	100.0	0	0.0	0	0.0	0	0	76	100
C92	Myeloid Leukemia	69	100.0	0	0.0	0	0.0	0	0	69	100
C93-95	Other Leukemia	38	100.0	0	0.0	0	0.0	0	0	38	100
Total		4366	89.7	288	5.9	110	2.3	103	2.12	4867	100

Table 13: Incident Cases of Cancer by Religion and Site (ICD10) with Crude Rates per 100,000 Population, Nagpur City, 2005-09, Male.

IDC10	SITE	Hindu		Muslim		Christian		Neo-Budhist		Jain		Sikh		Other		Unknown		Total	
		#	%	#	%	#	%	#	%	#	%	#	%	#	%	#	%	#	%
C00	Lip	12	0.3	1	0.2	0	0.0	1	0.1	0	0.0	0	0.0	0	0.0	0	0.0	14	0.2
C01-02	Tongue	262	6.0	23	3.7	1	1.4	0	0.0	0	0.0	0	0.0	1	8.4	0	0.0	287	4.7
C03	Gum	142	3.2	8	1.3	0	0.0	3	0.3	0	0.0	1	2.3	0	0.0	0	0.0	154	2.5
C04-06	Other Mouth	286	6.5	27	4.3	1	1.4	1	0.1	2	4.1	0	0.0	1	8.4	1	16.8	319	5.2
C07-08	Salivary Gland	23	0.5	5	0.8	0	0.0	0	0.0	0	0.0	0	0.0	0	0.0	0	0.0	28	0.5
C09-10	Orophoprarynx	103	2.4	5	0.8	2	2.8	0	0.0	0	0.0	0	0.0	0	0.0	0	0.0	110	1.8
C11	Nasopharynx	18	0.4	3	0.5	0	0.0	0	0.0	0	0.0	0	0.0	0	0.0	0	0.0	21	0.3
C12-13	Hypopharynx	128	2.9	11	1.8	3	4.2	1	0.1	0	0.0	0	0.0	0	0.0	0	0.0	143	2.3
C14	Other Oral	14	0.3	3	0.5	0	0.0	0	0.0	0	0.0	0	0.0	0	0.0	0	0.0	17	0.3
C15	Oesophagus	272	6.2	13	2.1	1	1.4	0	0.0	0	0.0	0	0.0	0	0.0	0	0.0	286	4.7
C16	Stomach	129	2.9	12	1.9	1	1.4	6	0.7	0	0.0	0	0.0	0	0.0	0	0.0	148	2.4
C17	Small Intenstine	3	0.1	0	0.0	0	0.0	0	0.0	0	0.0	0	0.0	0	0.0	0	0.0	3	0.0
C18	Colon	116	2.6	14	2.2	0	0.0	1	0.1	1	2.1	0	0.0	0	0.0	0	0.0	132	2.2
C19-21	Rectum	153	3.5	13	2.1	2	2.8	1	0.1	0	0.0	0	0.0	0	0.0	0	0.0	169	2.8
C22	Liver	91	2.1	3	0.5	0	0.0	1	0.1	0	0.0	0	0.0	0	0.0	0	0.0	95	1.6
C23-24	Gall Bladder	43	1.0	2	0.3	2	2.8	0	0.0	0	0.0	1	2.3	0	0.0	0	0.0	48	0.8
C25	Pancreas	46	1.0	3	0.5	2	2.8	0	0.0	0	0.0	0	0.0	0	0.0	0	0.0	51	0.8
C26	Other Dig Org	3	0.1	1	0.2	0	0.0	0	0.0	0	0.0	0	0.0	0	0.0	0	0.0	4	0.1
C30-31	Nose, Sinuses	48	1.1	1	0.2	0	0.0	1	0.1	0	0.0	0	0.0	0	0.0	0	0.0	50	0.8
C32	Larynx	256	5.8	40	6.4	1	1.4	4	0.4	1	2.1	0	0.0	0	0.0	0	0.0	302	5.0
C33-34	Lung	253	5.8	34	5.5	1	1.4	6	0.7	0	0.0	1	2.3	0	0.0	0	0.0	295	4.8
C37-38	Mediastinum, plura	10	0.2	1	0.2	1	1.4	0	0.0	0	0.0	0	0.0	0	0.0	0	0.0	12	0.2
C40-41	Bone	66	1.5	6	1.0	1	1.4	0	0.0	0	0.0	0	0.0	0	0.0	0	0.0	73	1.2
C43	Skin Melanoma	5	0.1	0	0.0	0	0.0	0	0.0	0	0.0	0	0.0	0	0.0	0	0.0	5	0.1
C44	Skin Others	49	1.1	6	1.0	0	0.0	1	0.1	0	0.0	1	2.3	0	0.0	0	0.0	57	0.9
C47	Nervous System	2	0.0	0	0.0	0	0.0	0	0.0	0	0.0	0	0.0	0	0.0	0	0.0	2	0.0
C48	Retroperitonium	2	0.0	1	0.2	0	0.0	0	0.0	0	0.0	0	0.0	0	0.0	0	0.0	3	0.0
C49	Conn & Soft Tissue	64	1.5	6	1.0	0	0.0	0	0.0	0	0.0	0	0.0	0	0.0	0	0.0	70	1.1
C50	Breast	68	1.6	2	0.3	2	2.8	1	0.1	0	0.0	1	2.3	0	0.0	0	0.0	74	1.2
C60	Penis	65	1.5	0	0.0	0	0.0	0	0.0	0	0.0	0	0.0	1	8.4	0	0.0	66	1.1
C61	Prostate	136	3.1	8	1.3	2	2.8	1	0.1	0	0.0	0	0.0	0	0.0	0	0.0	147	2.4
C62	Testis	61	1.4	4	0.6	0	0.0	0	0.0	0	0.0	0	0.0	0	0.0	0	0.0	65	1.1
C64-65	Kidney	48	1.1	4	0.6	0	0.0	1	0.1	0	0.0	0	0.0	0	0.0	0	0.0	53	0.9
C66-68	Urinary Bladder	89	2.0	10	1.6	2	2.8	1	0.1	0	0.0	1	2.3	0	0.0	0	0.0	103	1.7
C69	Eye	5	0.1	1	0.2	0	0.0	0	0.0	0	0.0	0	0.0	0	0.0	0	0.0	6	0.1
C70-72	Brain	122	2.8	14	2.2	0	0.0	0	0.0	0	0.0	0	0.0	0	0.0	0	0.0	136	2.2
C73	Thyroid	30	0.7	3	0.5	0	0.0	0	0.0	0	0.0	0	0.0	0	0.0	0	0.0	33	0.5
C74-75	Oth Endocrine Gland	5	0.1	0	0.0	0	0.0	0	0.0	0	0.0	0	0.0	0	0.0	0	0.0	5	0.1
C76	Oth Ill Def Sites	3	0.1	1	0.2	0	0.0	0	0.0	0	0.0	0	0.0	0	0.0	0	0.0	4	0.1
C77	Lymphnodes	70	1.6	6	1.0	0	0.0	0	0.0	0	0.0	0	0.0	0	0.0	0	0.0	76	1.2
C78	Sec Resp & Dig	38	0.9	1	0.2	0	0.0	0	0.0	0	0.0	0	0.0	0	0.0	0	0.0	39	0.6
C79	Sec Others	19	0.4	0	0.0	0	0.0	0	0.0	0	0.0	0	0.0	0	0.0	0	0.0	19	0.3
C80	Unknown Primary	215	4.9	115	18.5	3	4.2	0	0.0	2	4.1	1	2.3	0	0.0	0	0.0	336	5.5
C81	Hodgkins Lymphoma	29	0.7	2	0.3	1	1.4	0	0.0	0	0.0	0	0.0	0	0.0	0	0.0	32	0.5
C82-85	N.H.Lymphoma	164	3.7	9	1.4	5	7.0	0	0.0	0	0.0	0	0.0	0	0.0	0	0.0	178	2.9
C90	Multiple Myeloma	46	1.0	2	0.3	1	1.4	1	0.1	0	0.0	0	0.0	0	0.0	0	0.0	50	0.8
C91	Lymphoid Leukemia	112	2.6	15	2.4	0	0.0	0	0.0	0	0.0	1	2.3	0	0.0	0	0.0	128	2.1
C92	Myeloid Leukemia	87	2.0	8	1.3	2	2.8	2	0.2	0	0.0	0	0.0	0	0.0	0	0.0	99	1.6
C93-95	Other Leukemia	32	0.7	1	0.2	0	0.0	0	0.0	0	0.0	0	0.0	0	0.0	0	0.0	33	0.5
Total		4043	92.3	448	72.0	37	51.9	34	3.7	6	12.3	8	18.7	3	25.3	1	16.8	4580	75.2

Table 14: Incident Cases of Cancer by Religion and Site (ICD10) with Crude Rates per 100,000 Population, Nagpur City, 2005-09, Female.

ICD10	SITE	Hindu		Muslim		Christian		Neo-Budhist		Jain		Sikh		Other		Total	
		#	%	#	%	#	%	#	%	#	%	#	%	#	%	#	%
C00	Lip	12	0.3	2	0.3	0	0.0	0	0.0	0	0.0	0	0.0	0	0.0	14	0.2
C01-02	Tongue	89	2.2	9	1.5	0	0.0	0	0.0	0	0.0	0	0.0	0	0.0	98	1.7
C03	Gum	82	2.0	2	0.3	0	0.0	1	0.1	0	0.0	0	0.0	0	0.0	85	1.5
C04-06	Other Mouth	98	2.4	6	1.0	0	0.0	1	0.1	0	0.0	0	0.0	0	0.0	105	1.8
C07-08	Salivary Gland	18	0.4	1	0.2	0	0.0	0	0.0	0	0.0	0	0.0	0	0.0	19	0.3
C09-10	Oropharynx	11	0.3	2	0.3	0	0.0	0	0.0	0	0.0	0	0.0	0	0.0	13	0.2
C11	Nasopharynx	5	0.1	0	0.0	0	0.0	0	0.0	0	0.0	0	0.0	0	0.0	5	0.1
C12-13	Hypopharynx	32	0.8	1	0.2	0	0.0	1	0.1	0	0.0	0	0.0	0	0.0	34	0.6
C14	Other Oral	8	0.2	0	0.0	0	0.0	0	0.0	0	0.0	0	0.0	0	0.0	8	0.1
C15	Oesophagus	203	5.0	12	2.0	1	1.7	0	0.0	0	0.0	0	0.0	0	0.0	216	3.7
C16	Stomach	88	2.1	9	1.5	0	0.0	1	0.1	0	0.0	0	0.0	0	0.0	98	1.7
C17	Small Intestine	7	0.2	0	0.0	0	0.0	0	0.0	0	0.0	0	0.0	0	0.0	7	0.1
C18	Colon	74	1.8	9	1.5	1	1.7	0	0.0	0	0.0	2	4.9	0	0.0	86	1.5
C19-21	Rectum	99	2.4	4	0.7	0	0.0	1	0.1	0	0.0	0	0.0	1	8.4	105	1.8
C22	Liver	40	1.0	3	0.5	0	0.0	1	0.1	0	0.0	0	0.0	0	0.0	44	0.8
C23-24	Gall Bladder	35	0.9	6	1.0	0	0.0	0	0.0	0	0.0	0	0.0	0	0.0	41	0.7
C25	Pancreas	33	0.8	3	0.5	1	1.7	0	0.0	0	0.0	0	0.0	0	0.0	37	0.6
C26	Other Dig Org	0	0.0	1	0.2	0	0.0	0	0.0	0	0.0	0	0.0	0	0.0	1	0.0
C30-31	Nose, Sinuses	27	0.7	1	0.2	1	1.7	0	0.0	0	0.0	0	0.0	0	0.0	29	0.5
C32	Larynx	26	0.6	3	0.5	1	1.7	1	0.1	0	0.0	0	0.0	0	0.0	31	0.5
C33-34	Lung	79	1.9	6	1.0	2	3.4	1	0.1	1	2.2	1	2.5	0	0.0	90	1.6
C37-38	Mediastinum, plura	8	0.2	2	0.3	0	0.0	0	0.0	0	0.0	0	0.0	0	0.0	10	0.2
C40-41	Bone	47	1.1	2	0.3	0	0.0	0	0.0	0	0.0	0	0.0	0	0.0	49	0.8
C43	Skin Melanoma	3	0.1	0	0.0	0	0.0	0	0.0	0	0.0	0	0.0	0	0.0	3	0.1
C44	Skin Others	52	1.3	3	0.5	0	0.0	0	0.0	0	0.0	0	0.0	0	0.0	55	1.0
C47	Nervous System	1	0.0	0	0.0	0	0.0	0	0.0	0	0.0	0	0.0	0	0.0	1	0.0
C48	Retroperitonium	4	0.1	0	0.0	0	0.0	0	0.0	0	0.0	0	0.0	0	0.0	4	0.1
C49	Conn & Soft Tissue	50	1.2	5	0.8	0	0.0	0	0.0	0	0.0	0	0.0	0	0.0	55	1.0
C50	Breast	1354	33.0	111	18.3	13	21.9	4	0.4	1	2.2	0	0.0	1	8.4	1484	25.6
C51-52	Oth Fem Gen Org	32	0.8	0	0.0	0	0.0	0	0.0	0	0.0	0	0.0	0	0.0	32	0.6
C53	Cervix Uteri	704	17.2	28	4.6	3	5.1	8	0.9	1	2.2	0	0.0	0	0.0	744	12.9
C54	Corpus Uteri	104	2.5	5	0.8	1	1.7	0	0.0	0	0.0	1	2.5	0	0.0	111	1.9
C55	Uterus	10	0.2	1	0.2	0	0.0	0	0.0	0	0.0	0	0.0	0	0.0	11	0.2
C56	Ovary	266	6.5	19	3.1	2	3.4	2	0.2	0	0.0	0	0.0	0	0.0	289	5.0
C57-58	Oth Unsp Fem Gen Org	2	0.0	0	0.0	0	0.0	0	0.0	0	0.0	0	0.0	0	0.0	2	0.0
C64-65	Kidney	16	0.4	2	0.3	0	0.0	0	0.0	1	2.2	0	0.0	0	0.0	19	0.3
C66-68	Urinary Bladder	30	0.7	1	0.2	1	1.7	0	0.0	0	0.0	0	0.0	0	0.0	32	0.6
C69	Eye	4	0.1	0	0.0	0	0.0	0	0.0	0	0.0	0	0.0	0	0.0	4	0.1
C70-72	Brain	89	2.2	7	1.2	0	0.0	1	0.1	1	2.2	0	0.0	0	0.0	98	1.7
C73	Thyroid	46	1.1	3	0.5	0	0.0	0	0.0	0	0.0	0	0.0	0	0.0	49	0.8
C74-75	Oth Endocrine Gland	4	0.1	1	0.2	0	0.0	0	0.0	0	0.0	0	0.0	0	0.0	5	0.1
C76	Oth Ill Def Sites	3	0.1	1	0.2	0	0.0	0	0.0	0	0.0	0	0.0	0	0.0	4	0.1
C77	Lymphnodes	32	0.8	0	0.0	0	0.0	0	0.0	0	0.0	0	0.0	0	0.0	32	0.6
C78	Sec Resp & Dig	20	0.5	2	0.3	0	0.0	0	0.0	0	0.0	0	0.0	0	0.0	22	0.4
C79	Sec Others	11	0.3	0	0.0	0	0.0	0	0.0	0	0.0	0	0.0	0	0.0	11	0.2
C80	Unknown Primary	167	4.1	75	12.4	0	0.0	1	0.1	1	2.2	0	0.0	0	0.0	244	4.2
C81	Hodgkins Lymphoma	9	0.2	2	0.3	0	0.0	0	0.0	0	0.0	0	0.0	0	0.0	11	0.2
C82-85	N.H.Lymphoma	99	2.4	8	1.3	1	1.7	1	0.1	0	0.0	1	2.5	0	0.0	110	1.9
C88	Immunoproliferative Dis	1	0.0	0	0.0	0	0.0	0	0.0	0	0.0	0	0.0	0	0.0	1	0.0
C90	Multiple Myeloma	25	0.6	0	0.0	0	0.0	1	0.1	0	0.0	0	0.0	0	0.0	26	0.4
C91	Lymphoid Leukemia	71	1.7	4	0.7	0	0.0	1	0.1	0	0.0	0	0.0	0	0.0	76	1.3
C92	Myeloid Leukemia	62	1.5	5	0.8	0	0.0	1	0.1	0	0.0	0	0.0	1	8.4	69	1.2
C93-95	Other Leukemia	34	0.8	4	0.7	0	0.0	0	0.0	0	0.0	0	0.0	0	0.0	38	0.7
Total		4426	108.0	371	61.3	28	47.2	28	3.1	6	12.9	5	12.4	3	25.2	4867	84.1

Table 15: Number of Histologically proved Incident Cases of Cancer by Sex with Percentages, 2005-09, Nagpur City,

ICDO3	HISTOLOGY	MALE		FEMALE		Total	
		#	%	#	%	#	%
800	Malignant Neoplasms, NOS	672	14.7	561	11.5	1233	13.1
8001-8005	Malignant Tumors	42	0.9	53	1.1	95	1.0
801-804	Malignant Epithelial Neo	181	4.0	75	1.5	256	2.7
805-808	Squamous Cell Neoplasms	1830	40.0	1437	29.5	3267	34.6
809-811	Basal Cell Neoplasms	7	0.2	11	0.2	18	0.2
812-813	Transitionala Cell Carci	69	1.5	20	0.4	89	0.9
814-838	Adenocarcinomas	816	17.8	637	13.1	1453	15.4
839-842	Skin Appendage Neoplasms	0	0.0	1	0.0	1	0.0
843	Mucoepidermoid Neopl	6	0.1	2	0.0	8	0.1
844-849	Cystic, Mucious & Serou	16	0.3	89	1.8	105	1.1
850-854	Ductal and Lobular Neop	64	1.4	1391	28.6	1455	15.4
855	Acinar Cell Neoplasm	3	0.1	1	0.0	4	0.0
856-857	Complex Epithelial Neopl	1	0.0	3	0.1	4	0.0
859-867	Specialsied Gonadal Neo	0	0.0	3	0.1	3	0.0
868-871	Paragangliomas and Glom	0	0.0	1	0.0	1	0.0
872-879	Nevi and Melanomas	16	0.3	20	0.4	36	0.4
880	Soft Tissue Tumors a	47	1.0	41	0.8	88	0.9
881-883	Fibromatous Neoplasms	6	0.1	6	0.1	12	0.1
885-888	Lipomatous Neoplasms	2	0.0	2	0.0	4	0.0
889-892	Myomatous Neoplasms	16	0.3	15	0.3	31	0.3
893-899	Complex mixed and stroma	13	0.3	12	0.2	25	0.3
900-903	Fibroepithelial Neoplasm	1	0.0	13	0.3	14	0.1
904	Synovial Neoplasms	4	0.1	0	0.0	4	0.0
905	Mesothelial Neoplasms	1	0.0	0	0.0	1	0.0
906-909	Germ Cell Tumors	55	1.2	11	0.2	66	0.7
910	Triphoblastic Neoplas	0	0.0	3	0.1	3	0.0
912-916	Blood Vessel Tumors	1	0.0	0	0.0	1	0.0
918-924	Osseous and Chondromato	20	0.4	9	0.2	29	0.3
925	Germ Cell Tumors	23	0.5	16	0.3	39	0.4
926	Miscellaneous Tumors	11	0.2	6	0.1	17	0.2
927-934	Odontogenic Tumors	0	0.0	5	0.1	5	0.1
935-937	Miscellaneous Bone Tumo	5	0.1	0	0.0	5	0.1
938-948	Gliomas	117	2.6	86	1.8	203	2.1
949-952	Neuroepitheliomatous Ne	12	0.3	5	0.1	17	0.2
953	Meningiomas	0	0.0	2	0.0	2	0.0
954-957	Nerve Sheath Tumors	3	0.1	0	0.0	3	0.0
959	Malignant Lymphomas,	172	3.8	108	2.2	280	3.0
965-966	Hodgkins Lymphoma	34	0.7	11	0.2	45	0.5
967-972	Non Hodgkins Lymphoma	4	0.1	2	0.0	6	0.1
973	Plasma Cell Tumors	46	1.0	26	0.5	72	0.8
980-994	Leukemias	264	5.8	183	3.8	447	4.7
Total		4580	100.0	4867	100.0	9447	100.0

Table 16: Number of Cancer Deaths by Age and Site (ICD10) with Percentages, Nagpur City, 2005-09, Male.

ICD10	SITE	0	5	10	15	20	25	30	35	40	45	50	55	60	65	70	75	ANS	Total	%
C00	Lip	0	0	0	0	0	0	0	0	2	0	0	0	0	0	0	0	0	2	0.2
C01-02	Tongue	0	0	0	0	1	1	2	5	1	9	6	5	4	4	2	3	0	43	4.4
C03	Gum	0	0	0	0	0	1	0	2	2	2	0	0	1	1	0	1	0	10	1.0
C04-06	Other Mouth	0	0	0	0	0	3	3	3	4	5	2	1	1	2	0	2	0	26	2.7
C09-10	Oropharynx	0	0	1	0	0	2	0	1	1	1	3	2	1	1	2	0	0	15	1.5
C11	Nasopharynx	0	0	0	0	0	0	0	0	0	1	0	0	0	0	0	0	0	1	0.1
C12-13	Hypopharynx	0	0	0	0	0	0	0	0	2	1	1	3	1	1	1	1	0	11	1.1
C14	Other Oral	0	0	0	0	0	0	0	0	0	0	0	0	0	1	0	0	0	1	0.1
C15	Oesophagus	0	0	0	0	0	0	0	0	2	1	9	6	15	9	9	5	1	57	5.9
C16	Stomach	0	0	0	0	0	1	1	2	1	5	4	5	10	5	3	1	0	38	3.9
C18	Colon	0	0	0	0	0	0	1	0	0	2	4	1	1	11	3	2	0	25	2.6
C19-21	Rectum	0	0	0	0	0	1	1	1	2	7	3	3	2	1	2	1	0	24	2.5
C22	Liver	0	1	0	0	2	0	0	0	2	3	2	8	6	8	2	4	0	38	3.9
C23-24	Gall Bladder	0	0	0	0	0	0	0	0	1	3	1	2	0	4	1	2	2	16	1.6
C25	Pancreas	0	0	0	0	0	0	0	1	1	3	4	1	3	3	0	1	0	17	1.7
C26	Other Dig	0	0	0	0	0	0	0	0	0	1	0	0	1	0	1	0	0	3	0.3
C30-31	Nose, Sinuse	0	0	0	0	0	0	1	0	0	1	1	1	0	0	0	0	0	4	0.4
C32	Larynx	0	0	0	0	0	0	0	0	2	8	3	6	8	2	2	1	0	32	3.3
C33-34	Lung	0	0	0	0	0	1	0	1	4	5	12	10	14	14	12	3	1	77	7.9
C37-38	Mediastinum,	0	0	0	0	0	0	0	0	2	0	0	0	0	0	0	0	0	2	0.2
C40-41	Bone	0	0	0	0	2	0	0	0	0	0	0	0	0	0	0	0	0	2	0.2
C43	Skin Melan	0	0	0	0	0	0	2	0	0	0	0	0	0	1	0	0	0	3	0.3
C44	Skin Other	0	0	0	0	0	0	0	0	0	0	1	1	1	0	0	0	0	3	0.3
C48	Retroperitonium	0	0	0	0	0	0	0	0	0	0	0	0	0	1	0	0	0	1	0.1
C49	Conn & Soft Tissue	0	0	0	0	0	0	0	1	1	0	0	0	0	0	0	0	0	2	0.2
C50	Breast	0	0	0	0	0	1	0	0	3	2	0	1	0	0	0	0	0	7	0.7
C56	Ovary	0	0	0	0	0	0	0	0	0	0	0	0	0	0	0	1	0	1	0.1
C60	Penis	0	0	0	0	0	0	0	0	2	1	0	0	0	0	0	0	0	3	0.3
C61	Prostate	0	0	0	0	0	0	0	0	0	0	0	5	2	4	7	11	0	29	3.0
C62	Testis	0	0	0	0	1	0	1	2	1	1	1	0	0	1	0	0	0	8	0.8
C64-65	Kidney	0	1	2	0	0	0	0	1	0	0	1	0	0	1	1	0	0	7	0.7
C66-68	Urinary Bladder	0	0	0	0	0	0	1	0	1	1	2	1	0	1	2	2	0	11	1.1
C69	Eye	0	1	0	0	0	0	0	0	0	0	0	0	0	0	0	0	0	1	0.1
C70-72	Brain	1	1	1	2	0	0	2	1	1	3	1	3	0	1	0	2	2	21	2.2
C73	Thyroid	0	0	0	0	0	0	0	0	0	1	3	1	0	1	0	0	0	6	0.6
C76	Oth Ill Def Sites	0	0	0	0	0	0	0	0	0	0	0	1	1	0	0	0	0	2	0.2
C77	Lymphnodes	0	0	0	0	0	0	0	0	0	0	0	0	2	2	0	1	0	5	0.5
C78	Sec Resp & Dig	0	0	0	0	0	1	0	0	0	0	3	0	3	2	0	3	0	12	1.2
C79	Sec Others	0	0	0	0	0	0	0	3	0	0	0	0	0	0	1	2	0	6	0.6
C80	Unknown Primary	1	3	3	4	8	8	8	10	18	22	23	25	26	31	10	17	1	218	22.4
C81	Hodgkins Lymphoma	1	1	0	0	0	1	1	0	1	0	1	0	0	0	1	0	0	7	0.7
C82-85	N.H.Lymphoma	1	0	3	1	1	1	3	5	3	3	2	1	3	2	2	7	1	39	4.0
C90	Multiple Myeloma	0	0	2	0	0	0	2	0	1	1	5	3	3	5	5	1	0	28	2.9
C91	Lymphoid Leukemia	4	5	9	7	4	3	0	4	4	0	2	1	1	1	2	0	1	48	4.9
C92	Myeloid Leukemia	2	0	2	1	0	3	2	2	5	3	9	0	7	2	3	2	0	43	4.4
C93-95	Other Leukem	2	1	2	1	1	2	1	1	0	1	3	1	0	0	0	2	0	18	1.8
Total		12	14	25	16	20	30	32	46	70	97	112	98	117	123	74	78	9	973	100.0



Table 17: Number of Cancer Deaths by Age and Site (ICD10) with Percentages, Nagpur City, 2005-09, Female.

ICD10	SITE	0	5	10	15	20	25	30	35	40	45	50	55	60	65	70	75	ANS	Total	%
C00	Lip	0	0	0	0	0	0	1	0	0	0	0	0	1	0	0	0	1	3	0.4
C01-02	Tongue	0	0	0	0	0	0	1	1	2	0	3	0	1	1	0	1	0	10	1.3
C03	Gum	0	0	0	0	0	0	0	0	1	1	1	1	3	1	1	1	0	10	1.3
C04-06	Other Mouth	0	0	0	0	1	1	0	1	2	1	2	0	0	0	0	2	0	10	1.3
C09-10	Oropharynx	0	0	0	0	0	0	0	0	0	0	1	0	0	0	0	0	0	1	0.1
C12-13	Hypopharynx	0	0	0	0	0	0	2	0	0	0	1	0	1	0	0	0	0	4	0.5
C14	Other Oral	0	0	0	0	0	0	0	0	0	0	0	1	0	1	0	1	0	3	0.4
C15	Oesophagus	0	0	0	0	0	0	0	0	2	3	5	5	6	7	2	2	2	34	4.5
C16	Stomach	0	0	0	0	0	0	2	2	0	2	3	1	1	4	0	0	0	15	2.0
C18	Colon	0	0	0	0	0	0	0	1	2	1	1	3	3	0	2	1	1	15	2.0
C19-21	Rectum	0	0	0	0	0	0	2	0	1	0	1	3	1	2	2	1	1	14	1.8
C22	Liver	0	0	0	1	0	0	0	1	0	2	2	0	3	3	2	2	0	16	2.1
C23-24	Gall Bladder	0	0	0	0	0	0	1	0	1	3	0	1	0	0	1	1	1	9	1.2
C25	Pancreas	0	0	0	0	0	0	0	0	0	0	1	0	1	2	2	1	0	7	0.9
C30-31	Nose, Sinuse	0	0	0	0	0	0	0	0	0	0	1	0	0	0	0	0	0	1	0.1
C32	Larynx	0	0	0	0	0	0	0	0	0	0	1	0	2	0	0	1	0	4	0.5
C33-34	Lung	0	0	0	0	1	1	1	1	5	2	4	3	2	3	1	1	0	25	3.3
C37-38	Mediastinum,	0	0	0	0	0	0	0	0	2	0	1	0	1	1	1	0	0	6	0.8
C40-41	Bone	0	0	0	0	0	1	0	0	1	0	0	0	1	0	0	0	0	3	0.4
C44	Skin Other	0	0	0	0	0	0	1	0	0	0	0	1	0	0	0	0	0	2	0.3
C48	Retroperitonium	0	0	0	0	0	0	0	0	0	0	0	0	0	1	0	0	0	1	0.1
C49	Conn & Soft Tissue	0	0	1	0	0	0	1	0	0	0	0	0	1	0	0	0	0	3	0.4
C50	Breast	0	0	0	0	1	1	13	20	18	19	18	19	18	13	10	5	0	155	20.4
C51-52	Oth Fem Gen Org	0	0	0	0	0	0	0	0	0	1	0	0	1	1	0	0	0	3	0.4
C53	Cervix Uteri	0	0	0	0	0	0	2	5	7	4	15	4	7	5	5	4	1	59	7.8
C54	Corpus Uteri	0	0	0	0	0	0	0	0	1	0	0	0	0	2	0	2	0	5	0.7
C55	Uterus	0	0	0	0	0	0	0	0	0	0	1	0	0	0	0	0	0	1	0.1
C56	Ovary	0	0	0	0	0	1	2	3	2	4	8	3	4	4	1	0	0	32	4.2
C64-65	Kidney	1	0	0	0	0	0	0	0	0	0	1	0	1	0	1	0	0	4	0.5
C66-68	Urinary Bladder	0	0	0	0	0	0	0	1	0	1	0	0	1	0	1	2	0	6	0.8
C70-72	Brain	2	1	1	2	1	1	0	1	1	1	1	3	2	0	0	1	1	19	2.5
C73	Thyroid	0	0	0	1	0	0	1	0	0	1	1	0	2	1	1	0	0	8	1.1
C77	Lymphnode	0	0	0	0	0	0	0	0	0	0	1	1	0	0	0	1	0	3	0.4
C78	Sec Resp & Dig	0	0	0	0	0	0	0	0	0	0	1	1	0	1	0	0	1	4	0.5
C79	Sec Other	0	0	0	0	0	0	0	0	0	1	1	0	1	0	0	0	0	3	0.4
C80	Unknown Primary	2	1	3	4	3	2	11	16	16	23	28	11	17	21	8	9	3	178	23.5
C81	Hodgkins Lymphoma	0	1	0	0	0	0	0	0	0	0	0	0	0	0	0	0	0	1	0.1
C82-85	N.H.Lymphom	0	0	0	1	1	2	0	1	0	3	0	1	3	1	3	4	0	20	2.6
C90	Multiple Myeloma	0	0	0	0	0	1	0	0	1	0	0	0	1	0	0	0	0	3	0.4
C91	Lymphoid Leukemia	2	0	6	2	1	0	0	0	1	1	1	0	2	1	1	1	0	19	2.5
C92	Myeloid Leukemia	1	1	1	0	3	0	3	1	1	7	0	1	5	1	0	1	1	27	3.6
C93-95	Other Leukemia	0	0	1	2	1	1	3	0	0	0	4	1	0	0	0	0	0	13	1.7
Total		8	4	13	13	13	12	47	55	67	81	109	64	93	77	45	45	13	759	100.0

Table 18: Average Annual Age-Specific, World Age Adjusted, Truncated (35-64) Death Rates of Cancer Cases per 1000,000 Persons, Nagpur City, 2005-09, Male.

ICD10	SITE	0	5	10	15	20	25	30	35	40	45	50	55	60	65	70	75	CR	AAR	TR
C00	Lip	0.0	0.0	0.0	0.0	0.0	0.0	0.0	0.0	0.5	0.0	0.0	0.0	0.0	0.0	0.0	0.0	0.0	0.0	0.1
C01-02	Tongue	0.0	0.0	0.0	0.0	0.2	0.2	0.4	1.0	0.2	2.8	2.2	2.8	2.7	3.1	2.1	3.4	0.7	0.8	1.9
C03	Gum	0.0	0.0	0.0	0.0	0.0	0.2	0.0	0.4	0.5	0.6	0.0	0.0	0.7	0.8	0.0	1.1	0.2	0.2	0.4
C04-06	Other Mouth	0.0	0.0	0.0	0.0	0.0	0.5	0.6	0.6	1.0	1.5	0.7	0.6	0.7	1.6	0.0	2.3	0.4	0.4	0.9
C09-10	Oropharynx	0.0	0.0	0.1	0.0	0.0	0.4	0.0	0.2	0.2	0.3	1.1	1.1	0.7	0.8	2.1	0.0	0.2	0.3	0.6
C11	Nasopharynx	0.0	0.0	0.0	0.0	0.0	0.0	0.0	0.0	0.0	0.3	0.0	0.0	0.0	0.0	0.0	0.0	0.0	0.0	0.1
C12-13	Hypopharynx	0.0	0.0	0.0	0.0	0.0	0.0	0.0	0.0	0.5	0.3	0.4	1.7	0.7	0.8	1.0	1.1	0.2	0.2	0.5
C14	Other Oral	0.0	0.0	0.0	0.0	0.0	0.0	0.0	0.0	0.0	0.0	0.0	0.0	0.0	0.8	0.0	0.0	0.0	0.0	0.0
C15	Oesophagus	0.0	0.0	0.0	0.0	0.0	0.0	0.0	0.0	0.5	0.3	3.4	3.4	10.3	7.1	9.3	5.7	0.9	1.3	2.5
C16	Stomach	0.0	0.0	0.0	0.0	0.0	0.2	0.2	0.4	0.2	1.5	1.5	2.8	6.9	3.9	3.1	1.1	0.6	0.8	1.9
C18	Colon	0.0	0.0	0.0	0.0	0.0	0.0	0.2	0.0	0.0	0.6	1.5	0.6	0.7	8.6	3.1	2.3	0.4	0.5	0.5
C19-21	Rectum	0.0	0.0	0.0	0.0	0.0	0.2	0.2	0.2	0.5	2.2	1.1	1.7	1.4	0.8	2.1	1.1	0.4	0.5	1.1
C22	Liver	0.0	0.2	0.0	0.0	0.3	0.0	0.0	0.0	0.5	0.9	0.7	4.5	4.1	6.3	2.1	4.5	0.6	0.8	1.5
C23-24	Gall Bladder	0.0	0.0	0.0	0.0	0.0	0.0	0.0	0.0	0.2	0.9	0.4	1.1	0.0	3.1	1.0	2.3	0.3	0.3	0.4
C25	Pancreas	0.0	0.0	0.0	0.0	0.0	0.0	0.0	0.2	0.2	0.9	1.5	0.6	2.1	2.4	0.0	1.1	0.3	0.4	0.8
C26	Other Dig	0.0	0.0	0.0	0.0	0.0	0.0	0.0	0.0	0.0	0.3	0.0	0.0	0.7	0.0	1.0	0.0	0.0	0.1	0.1
C30-31	Nose, Sinuse	0.0	0.0	0.0	0.0	0.0	0.0	0.2	0.0	0.0	0.3	0.4	0.6	0.0	0.0	0.0	0.0	0.1	0.1	0.2
C32	Larynx	0.0	0.0	0.0	0.0	0.0	0.0	0.0	0.0	0.5	2.5	1.1	3.4	5.5	1.6	2.1	1.1	0.5	0.7	1.9
C33-34	Lung	0.0	0.0	0.0	0.0	0.0	0.2	0.0	0.2	1.0	1.5	4.5	5.6	9.6	11.0	12.4	3.4	1.3	1.7	3.2
C37-38	Mediastinum,	0.0	0.0	0.0	0.0	0.0	0.0	0.0	0.0	0.5	0.0	0.0	0.0	0.0	0.0	0.0	0.0	0.0	0.0	0.1
C40-41	Bone	0.0	0.0	0.0	0.0	0.3	0.0	0.0	0.0	0.0	0.0	0.0	0.0	0.0	0.0	0.0	0.0	0.0	0.0	0.0
C43	Skin Melan	0.0	0.0	0.0	0.0	0.0	0.0	0.4	0.0	0.0	0.0	0.0	0.0	0.0	0.8	0.0	0.0	0.0	0.0	0.0
C44	Skin Other	0.0	0.0	0.0	0.0	0.0	0.0	0.0	0.0	0.0	0.0	0.4	0.6	0.7	0.0	0.0	0.0	0.0	0.1	0.2
C48	Retroperitonium	0.0	0.0	0.0	0.0	0.0	0.0	0.0	0.0	0.0	0.0	0.0	0.0	0.0	0.8	0.0	0.0	0.0	0.0	0.0
C49	Conn & Soft Tissue	0.0	0.0	0.0	0.0	0.0	0.0	0.0	0.2	0.2	0.0	0.0	0.0	0.0	0.0	0.0	0.0	0.0	0.0	0.1
C50	Breast	0.0	0.0	0.0	0.0	0.0	0.2	0.0	0.0	0.7	0.6	0.0	0.6	0.0	0.0	0.0	0.0	0.1	0.1	0.3
C56	Ovary	0.0	0.0	0.0	0.0	0.0	0.0	0.0	0.0	0.0	0.0	0.0	0.0	0.0	0.0	0.0	1.1	0.0	0.0	0.0
C60	Penis	0.0	0.0	0.0	0.0	0.0	0.0	0.0	0.0	0.5	0.3	0.0	0.0	0.0	0.0	0.0	0.0	0.0	0.0	0.2
C61	Prostate	0.0	0.0	0.0	0.0	0.0	0.0	0.0	0.0	0.0	0.0	0.0	2.8	1.4	3.1	7.2	12.5	0.5	0.7	0.5
C62	Testis	0.0	0.0	0.0	0.0	0.2	0.0	0.2	0.4	0.2	0.3	0.4	0.0	0.0	0.8	0.0	0.0	0.1	0.1	0.2
C64-65	Kidney	0.0	0.2	0.3	0.0	0.0	0.0	0.0	0.2	0.0	0.0	0.4	0.0	0.0	0.8	1.0	0.0	0.1	0.1	0.1
C66-68	Urinary Bladder	0.0	0.0	0.0	0.0	0.0	0.0	0.2	0.0	0.2	0.3	0.7	0.6	0.0	0.8	2.1	2.3	0.2	0.2	0.3
C69	Eye	0.0	0.2	0.0	0.0	0.0	0.0	0.0	0.0	0.0	0.0	0.0	0.0	0.0	0.0	0.0	0.0	0.0	0.0	0.0
C70-72	Brain	0.2	0.2	0.1	0.3	0.0	0.0	0.4	0.2	0.2	0.9	0.4	1.7	0.0	0.8	0.0	2.3	0.3	0.3	0.5
C73	Thyroid	0.0	0.0	0.0	0.0	0.0	0.0	0.0	0.0	0.0	0.3	1.1	0.6	0.0	0.8	0.0	0.0	0.1	0.1	0.3
C76	Oth Ill Def Sites	0.0	0.0	0.0	0.0	0.0	0.0	0.0	0.0	0.0	0.0	0.0	0.6	0.7	0.0	0.0	0.0	0.0	0.0	0.2
C77	Lymphnodes	0.0	0.0	0.0	0.0	0.0	0.0	0.0	0.0	0.0	0.0	0.0	0.0	1.4	1.6	0.0	1.1	0.1	0.1	0.2
C78	Sec Resp & Dig	0.0	0.0	0.0	0.0	0.0	0.2	0.0	0.0	0.0	0.0	1.1	0.0	2.1	1.6	0.0	3.4	0.2	0.3	0.4
C79	Sec Others	0.0	0.0	0.0	0.0	0.0	0.0	0.0	0.6	0.0	0.0	0.0	0.0	0.0	0.0	1.0	2.3	0.1	0.1	0.1
C80	Unknown Primary	0.2	0.6	0.4	0.6	1.3	1.4	1.5	2.1	4.3	6.8	8.6	14.0	17.9	24.3	10.3	19.3	3.6	4.3	8.0
C81	Hodgkins Lymphoma	0.2	0.2	0.0	0.0	0.0	0.2	0.2	0.0	0.2	0.0	0.4	0.0	0.0	0.0	1.0	0.0	0.1	0.1	0.1
C82-85	N.H.Lymphoma	0.2	0.0	0.4	0.2	0.2	0.2	0.6	1.0	0.7	0.9	0.7	0.6	2.1	1.6	2.1	8.0	0.6	0.7	1.0
C90	Multiple Myeloma	0.0	0.0	0.3	0.0	0.0	0.0	0.4	0.0	0.2	0.3	1.9	1.7	2.1	3.9	5.1	1.1	0.5	0.6	0.9
C91	Lymphoid Leukemia	0.8	1.1	1.3	1.1	0.7	0.5	0.0	0.8	1.0	0.0	0.7	0.6	0.7	0.8	2.1	0.0	0.8	0.8	0.6
C92	Myeloid Leukemia	0.4	0.0	0.3	0.2	0.0	0.5	0.4	0.4	1.2	0.9	3.4	0.0	4.8	1.6	3.1	2.3	0.7	0.8	1.7
C93-95	Other Leukem	0.4	0.2	0.3	0.2	0.2	0.4	0.2	0.2	0.0	0.3	1.1	0.6	0.0	0.0	0.0	2.3	0.3	0.3	0.4
Total		2.4	3.0	3.7	2.6	3.3	5.3	5.9	9.6	16.7	29.9	41.7	55.0	80.4	96.6	76.2	88.7	16.0	19.3	35.1

Table 19: Average Annual Age-Specific, World Age Adjusted, Truncated (35-64) Death Rates of Cancer Cases per 1000,000 Persons, Nagpur City, 2005-09, Female.

ICD10	SITE	0	0	5	10	15	20	25	30	35	40	45	50	55	60	65	70	75	CR	AAR	TR
C00	Lip	0	0.0	0.0	0.0	0.0	0.0	0.0	0.2	0.0	0.0	0.0	0.0	0.0	0.6	0.0	0.0	0.0	0.1	0.0	0.1
C01-02	Tongue	0	0.0	0.0	0.0	0.0	0.0	0.0	0.2	0.2	0.5	0.0	1.4	0.0	0.6	0.6	0.0	1.1	0.2	0.2	0.4
C03	Gum	0	0.0	0.0	0.0	0.0	0.0	0.0	0.0	0.0	0.3	0.3	0.5	0.6	1.7	0.6	1.0	1.1	0.2	0.2	0.5
C04-06	Other Mouth	0	0.0	0.0	0.0	0.0	0.2	0.2	0.0	0.2	0.5	0.3	0.9	0.0	0.0	0.0	0.0	2.1	0.2	0.2	0.4
C09-10	Oropharynx	0	0.0	0.0	0.0	0.0	0.0	0.0	0.0	0.0	0.0	0.0	0.5	0.0	0.0	0.0	0.0	0.0	0.0	0.0	0.1
C12-13	Hypopharynx	0	0.0	0.0	0.0	0.0	0.0	0.0	0.4	0.0	0.0	0.0	0.5	0.0	0.6	0.0	0.0	0.0	0.1	0.1	0.2
C14	Other Oral	0	0.0	0.0	0.0	0.0	0.0	0.0	0.0	0.0	0.0	0.0	0.0	0.6	0.0	0.6	0.0	1.1	0.1	0.1	0.1
C15	Oesophagus	0	0.0	0.0	0.0	0.0	0.0	0.0	0.0	0.0	0.5	1.0	2.4	3.0	3.5	4.3	1.9	2.1	0.6	0.7	1.5
C16	Stomach	0	0.0	0.0	0.0	0.0	0.0	0.0	0.4	0.4	0.0	0.7	1.4	0.6	0.6	2.4	0.0	0.0	0.3	0.3	0.6
C18	Colon	0	0.0	0.0	0.0	0.0	0.0	0.0	0.0	0.2	0.5	0.3	0.5	1.8	1.7	0.0	1.9	1.1	0.3	0.3	0.7
C19-21	Rectum	0	0.0	0.0	0.0	0.0	0.0	0.0	0.4	0.0	0.3	0.0	0.5	1.8	0.6	1.2	1.9	1.1	0.2	0.3	0.4
C22	Liver	0	0.0	0.0	0.0	0.2	0.0	0.0	0.0	0.2	0.0	0.7	0.9	0.0	1.7	1.8	1.9	2.1	0.3	0.3	0.5
C23-24	Gall Bladder	0	0.0	0.0	0.0	0.0	0.0	0.0	0.2	0.0	0.3	1.0	0.0	0.6	0.0	0.0	1.0	1.1	0.2	0.2	0.3
C25	Pancreas	0	0.0	0.0	0.0	0.0	0.0	0.0	0.0	0.0	0.0	0.0	0.5	0.0	0.6	1.2	1.9	1.1	0.1	0.1	0.2
C30-31	Nose, Sinuse	0	0.0	0.0	0.0	0.0	0.0	0.0	0.0	0.0	0.0	0.0	0.5	0.0	0.0	0.0	0.0	0.0	0.0	0.0	0.1
C32	Larynx	0	0.0	0.0	0.0	0.0	0.0	0.0	0.0	0.0	0.0	0.0	0.5	0.0	1.2	0.0	0.0	1.1	0.1	0.1	0.2
C33-34	Lung	0	0.0	0.0	0.0	0.0	0.2	0.2	0.2	0.2	1.4	0.7	1.9	1.8	1.2	1.8	1.0	1.1	0.4	0.5	1.1
C37-38	Mediastinum,	0	0.0	0.0	0.0	0.0	0.0	0.0	0.0	0.0	0.5	0.0	0.5	0.0	0.6	0.6	1.0	0.0	0.1	0.1	0.3
C40-41	Bone	0	0.0	0.0	0.0	0.0	0.0	0.2	0.0	0.0	0.3	0.0	0.0	0.0	0.6	0.0	0.0	0.0	0.1	0.1	0.1
C44	Skin Other	0	0.0	0.0	0.0	0.0	0.0	0.0	0.2	0.0	0.0	0.0	0.0	0.6	0.0	0.0	0.0	0.0	0.0	0.0	0.1
C48	Retroperitonium	0	0.0	0.0	0.0	0.0	0.0	0.0	0.0	0.0	0.0	0.0	0.0	0.0	0.6	0.0	0.0	0.0	0.0	0.0	0.0
C49	Conn & Soft Tissue	0	0.0	0.0	0.2	0.0	0.0	0.0	0.2	0.0	0.0	0.0	0.0	0.0	0.6	0.0	0.0	0.0	0.1	0.0	0.1
C50	Breast	0	0.0	0.0	0.0	0.0	0.2	0.2	2.5	4.2	4.9	6.4	8.5	11.5	10.4	7.9	9.6	5.4	2.7	3.0	7.2
C51-52	Oth Fem Gen Org	0	0.0	0.0	0.0	0.0	0.0	0.0	0.0	0.0	0.3	0.0	0.0	0.6	0.6	0.0	0.0	0.0	0.1	0.1	0.1
C53	Cervix Uteri	0	0.0	0.0	0.0	0.0	0.0	0.0	0.4	1.1	1.9	1.3	7.1	2.4	4.0	3.1	4.8	4.3	1.0	1.2	2.8
C54	Corpus Uteri	0	0.0	0.0	0.0	0.0	0.0	0.0	0.0	0.0	0.3	0.0	0.0	0.0	0.0	1.2	0.0	2.1	0.1	0.1	0.1
C55	Uterus	0	0.0	0.0	0.0	0.0	0.0	0.0	0.0	0.0	0.0	0.0	0.5	0.0	0.0	0.0	0.0	0.0	0.0	0.0	0.1
C56	Ovary	0	0.0	0.0	0.0	0.0	0.0	0.2	0.4	0.6	0.5	1.3	3.8	1.8	2.3	2.4	1.0	0.0	0.6	0.6	1.6
C64-65	Kidney	1	0.2	0.0	0.0	0.0	0.0	0.0	0.0	0.0	0.0	0.0	0.5	0.0	0.6	0.0	1.0	0.0	0.1	0.1	0.2
C66-68	Urinary Bladder	0	0.0	0.0	0.0	0.0	0.0	0.0	0.0	0.2	0.0	0.3	0.0	0.0	0.6	0.0	1.0	2.1	0.1	0.1	0.2
C70-72	Brain	2	0.4	0.2	0.2	0.4	0.2	0.2	0.0	0.2	0.3	0.3	0.5	1.8	1.2	0.0	0.0	1.1	0.3	0.4	0.6
C73	Thyroid	0	0.0	0.0	0.0	0.2	0.0	0.0	0.2	0.0	0.0	0.3	0.5	0.0	1.2	0.6	1.0	0.0	0.1	0.2	0.3
C77	Lymphnode	0	0.0	0.0	0.0	0.0	0.0	0.0	0.0	0.0	0.0	0.0	0.5	0.6	0.0	0.0	0.0	1.1	0.1	0.1	0.2
C78	Sec Resp & Dig	0	0.0	0.0	0.0	0.0	0.0	0.0	0.0	0.0	0.0	0.0	0.5	0.6	0.0	0.6	0.0	0.0	0.1	0.1	0.2
C79	Sec Other	0	0.0	0.0	0.0	0.0	0.0	0.0	0.0	0.0	0.0	0.3	0.5	0.0	0.6	0.0	0.0	0.0	0.1	0.1	0.2
C80	Unknown Primary	2	0.4	0.2	0.5	0.7	0.5	0.3	2.1	3.4	4.4	7.7	13.2	6.7	9.8	12.8	7.7	9.6	3.1	3.4	7.3
C81	Hodgkins Lymphoma	0	0.0	0.2	0.0	0.0	0.0	0.0	0.0	0.0	0.0	0.0	0.0	0.0	0.0	0.0	0.0	0.0	0.0	0.0	0.0
C82-85	N.H.Lymphoma	0	0.0	0.0	0.0	0.2	0.2	0.3	0.0	0.2	0.0	1.0	0.0	0.6	1.7	0.6	2.9	4.3	0.3	0.4	0.5
C90	Multiple Myeloma	0	0.0	0.0	0.0	0.0	0.0	0.2	0.0	0.0	0.3	0.0	0.0	0.0	0.6	0.0	0.0	0.0	0.1	0.1	0.1
C91	Lymphoid Leukemia	2	0.4	0.0	1.0	0.4	0.2	0.0	0.0	0.0	0.3	0.3	0.5	0.0	1.2	0.6	1.0	1.1	0.3	0.4	0.3
C92	Myeloid Leukemia	1	0.2	0.2	0.2	0.0	0.5	0.0	0.6	0.2	0.3	2.4	0.0	0.6	2.9	0.6	0.0	1.1	0.5	0.5	1.0
C93-95	Other Leukemia	0	0.0	0.0	0.2	0.4	0.2	0.2	0.6	0.0	0.0	0.0	1.9	0.6	0.0	0.0	0.0	0.0	0.2	0.2	0.4
Total		8	1.8	0.9	2.1	2.3	2.3	2.1	9.1	11.6	18.3	27.3	51.4	38.7	53.8	47.0	43.3	48.2	13.1	14.5	31.3

## **Publications:**

### **(a) Monographs:**

1. Cancer Incidence in Greater Bombay, 1967-1968. Bombay Cancer Registry, Indian Cancer Society, Bombay, 1973.
2. Cancer Incidence in Greater Bombay, 1970-1972. Bombay Cancer Registry, Indian Cancer Society, Bombay, 1976.
3. Cancer Morbidity and Mortality in Poona City, 1972-1974. Indian Cancer Society, Bombay, 1978.
4. Trends in Cancer Incidence in Greater Bombay, 1964-1972. An epidemiological Study. Bombay Cancer Registry, Indian Cancer Society, 1980.
5. Cancer Morbidity and Mortality in Poona City, 1975-1977. Indian Cancer Society, Bombay, 1981.
6. Cancer Morbidity and Mortality in Greater Bombay, 1983. Indian Cancer Society, 1984.
7. Cancer Morbidity and Mortality in Poona City, 1978-1980. Indian Cancer Society, 1984.
8. Cancer Incidence in Greater Bombay (By Religion and Sex), 1973-78 Indian Cancer Society, 1985.
9. Cancer Morbidity and Mortality in Greater Bombay, 1984. Indian Cancer Society, 1986.
10. Cancer Morbidity and Mortality in Greater Bombay, 1985. Indian Cancer Society, 1987.
11. Cancer Morbidity and Mortality in Nagpur City, 1980-1984. Indian Cancer Society, 1987.
12. Cancer Morbidity and Mortality in Poona City, 1981-1985. Indian Cancer Society, Bombay, 1988.
13. Cancer Incidence in Greater Bombay, (By City, Ward, Residence, Sex and Age) 1979-1984. Indian Cancer Society, Bombay, 1988.
14. Cancer Morbidity and Mortality in Greater Bombay, 1986-1987. Indian Cancer Society, Bombay, 1989.
15. Cancer Morbidity and Mortality in Greater Bombay, 1988. Indian Cancer Society, Bombay, 1990.
16. Cancer Morbidity and Mortality in Greater Bombay, 1989. Indian Cancer Society, Bombay, 1991.
17. Cancer Morbidity and Mortality in Nagpur City, 1985-89. Indian Cancer Society, Bombay, 1991.
18. Cancer Morbidity and Mortality in Greater Bombay, 1990. Indian Cancer Society, Bombay, 1992.
19. Cancer Morbidity and Mortality in Greater Bombay, 1991. Indian Cancer Society, Bombay, 1993.
20. Cancer Morbidity and Mortality in Poona City, 1986-1990. Indian Cancer Society, Bombay, 1993.
21. Cancer Morbidity and Mortality in Greater Bombay, 1992. Indian Cancer Society, Bombay, 1995.
22. Cancer Morbidity and Mortality in Greater Bombay, 1993. Indian Cancer Society, Bombay, 1995.
23. Cancer Morbidity and Mortality in Greater Bombay, 1994. Indian Cancer Society, Bombay, 1997.
24. Cancer Morbidity and Mortality in Greater Bombay, 1995. Jussawalla DJ, Yeole BB and Sunny Lizzy, 1998.
25. Cancer Morbidity and Mortality in Pune City, 1986-90. Jussawalla DJ, Yeole BB, Pratinidhi AK and Sunny Lizzy, 1998.

26. Cancer Morbidity and Mortality in Nagpur City, 1990-94. Jussawalla DJ, Yeole BB, Deshmukh NK, Sunny Lizzy, 1998.
27. Cancer Morbidity and Mortality in Greater Bombay, 1996. Jussawalla DJ, Yeole BB and Sunny Lizzy, 1999.
28. Cancer Morbidity and Mortality in Greater Bombay, 1997. Jussawalla DJ, Yeole BB and Sunny Lizzy, 2001.
29. Cancer Morbidity and Mortality in Greater Bombay, 1998. Kavarana NM, Kamat MR, Kurkure AP, Yeole BB and Sunny Lizzy, 2001.
30. Cancer Morbidity and Mortality in Greater Bombay, 1999. Kavarana NM, Kamat MR, Kurkure AP, Yeole BB and Methar SK, 2001.
31. Cancer Morbidity and Mortality in Pune City, 1996-2000, Kavarana NM, Kamat MR, Kurkure AP, Yeole BB, Pratinidhi AK, Koppikar CB, Sunny Lizzy and Kavita CJ, 2003.
32. Cancer Morbidity and Mortality in Nagpur City, 1995-99, Kavarana NM, Kamat MR, Kurkure AP, Yeole BB, Varsha S, Sunny Lizzy and Kavita CJ, 2003.
33. Cancer Morbidity and Mortality in Greater Bombay, 2000. Kavarana NM, Kamat MR, Kurkure AP, Yeole BB and Sunny Lizzy, 2003.
34. Cancer Morbidity and Mortality in Greater Bombay, 2001. Kurkure AP, Yeole BB, Sunny Lizzy and Koyande SS, 2005
35. Cancer Incidence and its Patterns in Urban Maharashtra for year 2001, Kurkure AP, Yeole BB and Koyande SS, 2006.
36. Cancer Incidence in Aurangabad City Agglomeration 1995-2004, Kurkure AP, Yeole BB and Koyande SS, Shastri NG, 2006.
37. Cancer Morbidity and Mortality in Greater Bombay, 2002-04. Kurkure AP, Yeole BB and Koyande SS, 2008
38. Cancer Morbidity and Mortality in Pune City, 2001-2005 Kurkure AP, Yeole BB, JK Joshi, SS Jawdekar Koyande SS, KC Jadhav and RP Vagal , 2008.
39. Cancer Morbidity and Mortality in Nagpur City, 1999-2004 Kurkure AP, Yeole BB, Varsha Sagdeo, Santanu Choudhuri, Koyande SS, Bandekar PP and Khandekar MV, 2009.
40. Cancer Morbidity and Mortality in Greater Bombay, 2005. Kurkure AP, Yeole BB and Koyande SS, 2009.
41. Cancer Morbidity and Mortality in Greater Bombay, 2006. Kurkure AP, Yeole BB and Koyande SS, 2009.
42. Cancer Morbidity and Mortality in Greater Bombay, 2007. Kurkure AP, and Koyande SS, 2012.
43. Cancer Morbidity and Mortality in Greater Bombay, 2008, Kurkure AP, Koyande SS, and Thorat VR, 2012.
44. Cancer Morbidity and Mortality in Greater Bombay, 2009, Kurkure AP, Koyande SS, and Thorat VR, 2012.
45. Cancer Morbidity and Mortality in Nagpur City, 2005-2009, Kurkure AP, Kamble KM, Koyande SS, Thorat VR, and Phadke AV, 2012.
46. Cancer Morbidity and Mortality in Auranagabad city, 2005-2009, Kurkure AP, Shewalkar BK, Koyande SS, Thorat VR, and Phadke AV, 2012.

**(b) In Indian Journal:**

1. An Analysis of the Progress in Family Planning Programme in Mysore. Journal of Institute of Economic Research, 1970.
2. On Estimating the School Going Population for Compulsory Education in Some ESAFE Countries. The Indian Educational Review, New Delhi, 1972.
3. Impact of Large Scale Sterilization Programme on Some Demographic Characteristics of the Population. "Sankya", Indian Statistical Institute, Calcutta, 1974.
4. Impact of Improvement in Mortality on Birth-rate in India. The Journal of Christian Medical Association of India, 1973.
5. Reduction in Birth Rate due to Various Combinations of Sterilization, UICD and Contraceptive Programme in India through use of Birth order Statistics. "Sankya", Indian Statistical Institute, Calcutta, 1974.
6. Estimation of School Enrolment by Grades and Sex, Required Number of Teachers and Total Recurring Expenditure for Maharashtra. Indian Education Review, New Delhi, 1974.
7. Cancer in Children in Greater Bombay, 1964-1972. A Comparative Study. The Indian Journal of Cancer, Indian Cancer Society, Bombay, 1975.
8. Epidemiology of Breast Cancer in India. The Indian Journal of Cancer, Indian Cancer Society, Bombay, 1975.
9. Differences in Site Patterns of Cancer in Sindhi and Parsi Sub- groups and the General Population of Greater Bombay. Indian Journal of Cancer, Indian Cancer Society, Bombay, 1980.
10. The Population Based Cancer Registry: Need and Importance to the Community. Indian Journal of Cancer, Indian Cancer Society, Bombay, 1980.
11. Geographic Variations in Cancer Incidence in two urban populations in India (Greater Bombay and Poona City). Indian Journal of Cancer, Indian Cancer Society, Bombay, 1980.
12. Resources Necessary for the Efficient Operation of a Population Based Cancer Registry, Indian Journal of Cancer, Indian Cancer Society, Bombay, 1981.
13. An Assessment of Cancer Mortality in Greater Bombay, Indian Journal of Medical Research, New Delhi, 1982.
14. Techniques of Registration System in Population Based Cancer Registry. Principles and Practice of Statistics in Medicine, Himalaya Publishing House, Bombay, 1985.
15. Epidemiological Study of Malignant Melanoma in Greater Bombay. Indian Journal of Cancer, Indian Cancer Society, Bombay, 1988.
16. As Assessment of Reliability and Completeness of Bombay Cancer Registry Data 1964-1985. Indian Journal of Cancer, Indian Cancer Society, Bombay, 1988.
17. Childhood Cancer in Greater Bombay, Indian Journal of Cancer, Indian Cancer Society, Bombay, 1988.
18. Epidemiology of Breast Cancer in India with special reference to the Parsi Community. Tata McGraw Hill Publishing Co., Ltd., New Delhi, 1988.
19. Incidence and Etiology of Multiple Myeloma of Greater Bombay, Indian Journal of Cancer, Indian Cancer Society, Bombay, 1990.
20. Geographic Differences in Cancer Incidence by Sex at Various Sites in City Wards in Greater Bombay, Indian Journal of Cancer, Indian Cancer Society, Bombay, 1990.

21. Descriptive Epidemiology and Trends in Incidence of Monocular Malignant Melanoma in Bombay and India, accepted for Publication in the Indian Journal of Cancer, Indian Cancer Society, Bombay, 1994.
22. Is Cancer of the Uterine Cervix on the decline in Bombay City? Indian Journal of Cancer, Vol.,32-pp,149-151, Bombay, 1995.
23. Descriptive Epidemiology of Thyroid Cancer in Greater Bombay, Indian Journal of Cancer, Bombay, India, 35,pp,57-64,1998.
24. Descriptive Epidemiology of Cancers of the Male Genital Organs in Greater Bombay, Indian Journal of Cancer, 31,pp,30-39,1997.
25. Descriptive Epidemiology of Bone Cancers in Greater Bombay, Indian Journal Cancer, Bombay, 35, pp,101-106,1998.
26. Descriptive Epidemiology of Urinary organs in Greater Bombay, Indian Journal of Medical Research, New Delhi, 106,pp,517-523, 1997.
27. Descriptive Epidemiology of Haemopoietic Malignancies in Greater Bombay, National Medical Journal of India, New Delhi, 11, pp, 115-120, 1998.
28. Attributable causes of survival among leading cancer sites in Greater Bombay, In proceedings of International Conference on Stochastic Processes and their applications at Chennai,199, pp, 50-60, 1998.
29. Bladder Cancer in Mumbai, India, Yeole BB, Ostomy International, Mumbai, 21, pp, 26-27, 1999.
30. Trends and Predictions in Cancer Incidence in Greater Bombay, Yeole BB, Indian Journal of Cancer, 36, pp,160-178, 1999.
31. Population Based Survival from Prostate Cancer in Mumbai, Indian Journal of Cancer., 2000.
32. Cancer Mortality in Greater Bombay "Counting the Head in India in the twenty first century", Proceedings of International Workshop on certification of causes of death, Tata Institute of Fundamental Research, Mumbai, 1999.
33. Cancer Morbidity and Mortality in Nagpur City agglomeration – 1994, accepted for publication in a News letter of the National Cancer Registry Project, Indian Council of Medical Research, 2000.
34. Cancer Morbidity and Mortality in Pune City agglomeration – 1994, accepted for publication in a News letter of the National Cancer Registry Project, Indian Council of Medical Research, 2000.
35. Cancer Morbidity and Mortality in Aurangabad City agglomeration – 1994, accepted for publication in a News letter of the National Cancer Registry Project, Indian Council of Medical Research, 2000.
36. An epidemiology of cancer in particular reference to India, BB Yeole, In : CANCER –A Cytogenetic and Molecular Approach, Bioved Research Society, Alahabad, India, pp. 21-55, 2005.
37. Epidemiological Assessment of Lung cancer in India, B.B.Yeole and A.P.Kurkure, In the Oncology Knowledge Bank; Lung Cancer , Vol, 2006, pp 9-17, Mumbai, India, 2006.
38. An Epidemiological Assessment of Colorectal Cancers with special reference to India. Yeole BB, JCD, Vol-23, pp 29-33, 2008.
39. Epidemiological Review of Gastric Cancer in India, Rajesh Dixit, Garima Mathur, Sharayu Mhatre, B.B. Yeole, Indian Journal of Medical and Pediatric Oncology, Vol.32, Jan-March Issue – I, pp. 3-11,2011.
40. Changing Trends of Chronic Myeloid Leukemia in Greater Mumbai, India Over a period of 30 years..Rajesh Dixit, Rajni Nagrani, B.B. Yeole, S.S. Koyande, S. Banawali, Indian Journal of Medical and Pediatric Oncology, Vol.32, April-June Issue – I pp. 95-99, 2011.

(c) **In International Journal:**

1. Estimation of Future Elementary and Middle School Enrolment in the Republic of Korea. "Statistica", Journal of Korean Government, 1971.
2. Cancer in the Sindhi Speaking Population of Greater Bombay, 1964-1972. "CANCER", Philadelphia, U.S.A., 1980.
3. Histological and Epidemiological Features of Breast Cancer in Different Religious Groups in Greater Bombay. Journal of Surgical Oncology, New York, U.S.A., 1981.
4. Ovarian Cancer in Greater Bombay, UICC Technical Report Series, Geneva, 1983.
5. Benign and Malignant Ovarian Tumors in a General Hospitals Material from Greater Bombay, India. UICC Technical Report Series, Geneva, 1983.
6. Epidemiology of Cancer of Cervix in Greater Bombay, Journal of Surgical Oncology, New York, U.S.A., 1984.
7. Cancer Incidence in Indian Christians. British Journal of Cancer, Manchester, U.K., 1985.
8. Cancer in Indian Moslems, "CANCER", Philadelphia, U.S.A., 1985.
9. Cancer in Young Adults (Between the ages of 15 and 34 years) in Greater Bombay. Journal of Surgical Oncology, New York, U.S.A., 1985.
10. Cancers of the upper alimentary and respiratory tracts in Bombay, India: A study of incidence over two decades. British Journal of Cancer, U.K., 1987.
11. Early detection of Breast Cancer in Developing Countries, Lancet, 1989.
12. Declining Trend in Cervical Cancer Incidence in Bombay (1964- 1985). Journal of Surgical Oncology, U.S.A., 1989.
13. High Mortality Rate from Breast Cancer in Greater Bombay. Potential for Early Detection by Physical Examination. Journal of Cancer Detection and Prevention, New York, 1989.
14. Trends in Breast Cancer Incidence in Greater Bombay. Epidemiological Assessment. WHO Bulletin, Geneva, Switzerland, 1990.
15. Tobacco Related Cancers in Bombay, India. A Study of Incidence Over Two Decades. Oxford University Press, Bombay, 1992.
16. Cancer Incidence and Trends in Bombay, India. European Journal of Cancer, London, U.K., 1992.
17. Trends in Cancers of the upper alimentary and respiratory tracts in women in Bombay, India. International Journal of Oncology, 1993.
18. Declining Trends in Tobacco Related Pharyngeal Cancers, Commonest in males from 1965-1985, in Bombay, India, accepted for publication in "CANCER", Philadelphia, U.S.A., 1994.
19. Cohort Data Analysis: Logistic Regression, Poisson Regression and Cox-regression model? Tampere University Journal, 1995.
20. Effect of Socio-economic and Environmental Factors on the incidence of Prostate Cancer in Finland, sent for publication, 1995
21. Descriptive Epidemiological Assessment of cancers of the Breast, Ovary and Uterine Corpus in Greater Bombay, Oncology Reports, 4:455-462, 1997.
22. Descriptive Epidemiology of Lymphatic Malignancies in Greater Bombay, Oncology Reports, Athens, 5, pp, 1-7, 1998.
23. Increasing Trends in Incidence of Adenocarcinoma of the Cervix Uteri from 1965-1985 in Bombay, India, Journal obstetrics



- and gynecology research, Tokyo, Japan, 23, pp, 521-527, 1997.
24. Vasectomy and Prostate Cancer: A Case-Control Study in India, *International Journal of Epidemiology*, Liverpool, 26, pp, 933-938, 1997.
  25. Cancer in India in the year 2001. An Epidemiological Study. Yeole BB, Ph.D. Dissertation, University of Tampere, Finland, 1997.
  26. Survival from Breast and Cervix cancer in Bombay. Yeole BB, Jussawalla DJ, Sabnis SD and Sunny Lizzy. In survival front cancer in developing countries monograph, Eds Sankaranarayanan R, Black RJ and Parkin DM. IARC Scientific Publications, 145, Lyon, 1997.
  27. Long Term Survival from uterine cervical cancer in Mumbai (Bombay), India, Yeole BB, Sankaranarayanan R and Jussawalla DJ, *International Journal of Cancer*, 78, 394-395, 1998.
  28. Bladder Cancer in Mumbai, India, *Ostomy International*, Mumbai, 26-27, 1999.
  29. Trends in Cancer Incidence in Greater Mumbai, *Cancer Strategy*, 7, pp 1-6, 2000.
  30. Survival from Head and Neck Cancer in Mumbai (Bombay), India, *CANCER*, vol 89-2, pp ,2000.
  31. Population Based Survival from colorectal cancer in Mumbai Bombay),India, *European Journal of Cancer*, 2000.
  32. An epidemiological features of childhood cancers in Greater Bombay, Yeole BB, Advani SH and Lizzy Sunny, *Indian Pediatrics*, New Delhi, vol 38, pp1270-1277, 2001.
  33. An assessment of cancer incidence patterns in Parsi and Non-Parsi population, Yeole BB, Advani SH, Kurkure AP and Lizzy Sunny, *Asian Pacific Journal of Cancer Prevention*, Bangkok, vol 12, pp 293-298, 2001.
  34. An assessment of improvement in reliability and completeness of Mumbai Cancer Registry data from 1965-1997, Yeole BB, *Asian Pacific Organization for cancer prevention*, Bangkok, vol 2, pp 225-232, 2001.
  35. Epidemiological assessment of lung cancer in India, BB Yeole, *Proceedings of NAPCON-2001*, Mumbai, pp 184-188, 2001.
  36. Population based survival from prostate cancer in Bombay (Bombay), India, Yeole BB and Lizzy Sunny, *Indian Journal of Cancer*, Bombay, India, vol 38, 126-132, 2001.
  37. Retinoblastoma: An epidemiological appraisal in reference to Mumbai Population, India. Yeole BB and Advani SH, *Asian Pacific Journal for cancer prevention*, Bangkok, vol 3, pp 17-22, 2002.
  38. Cancer in Women in India, An epidemiological assessment, BB Yeole. Published in *Asian Pacific Journal for cancer prevention*, Bangkok, vol 3, pp 137-142, 2002.
  39. An epidemiological assessment of increasing incidence and trend in breast cancer in Mumbai- India, during last two decades. BB Yeole, AP Kurkure, Published in *Asian Pacific Journal for cancer prevention*, Bangkok, vol 4, pp 51-56, 2003.
  40. Survival from glottic and supraglottic laryngeal carcinoma in Mumbai Bombay), India. BB Yeole, R Sankaranarayanan and AV Ramanakumar. *Oral Oncology*, pp 1-8, 2003.
  41. Survival from Oral Cancers in Mumbai (Bombay), India. BB Yeole, AV Ramanakumar and R Sankaranarayanan. 'Cancer Causes and Control', vol 14, pp 945-950, 2003.
  42. Population-based Survival from Cancers Having a Poor Prognosis in Mumbai (Bombay), India. Yeole BB, AV Kumar. *Asian Pacific J Cancer Prev*, 5,175-182, 2004.
  43. Decreasing Trend in the Incidence of Stomach Cancer in Mumbai, India, during 1988 to 1999. Lizzy Sunny, Yeole BB, Shiri R,

- Mathews S, Falah Hassani K, Advani SH, Asian Pacific J Cancer Prev, 5(2),167-172, 2004.
44. Oral cancers in Mumbai, India: A Fifteen Years Perspective with Respect to Incidence Trend and Cumulative Risk. Lizzy Sunny, Yeole BB, Hakama M, Shiri R, PSRK Sastri, Mathews S, Advani SH, Asian Pacific J Cancer Prev, 5(3), 294-300, 2004.
  45. Population-based survival from cancers of breast, cervix and ovary in women in Mumbai, India. B.B. Yeole, Venkata Ramana Kumar, Arun Kurkure, Lizzy Sunny. Asian Pacific J Cancer Prev, 5(3), 308-315, 2004.
  46. Cumulative risk and trends in prostate cancer incidence in Mumbai, India, 1986 to 2000. Lizzy Sunny, Yeole BB, Hakama M, Kurkure AP, Mathews S, Shastri NG, Advani SH. Asian Pacific J Cancer Prev, 5(4), 401-405, 2004.
  47. Coping Mechanisms among long-term survivors of breast and cervical cancer in Mumbai, India, Agnihotram V. Ramanakumar, Yeole Balkrishna, Garimella Ramarao, Asian Pacific Journal of Cancer Prevention, Vol.6, 189-194, 2005
  48. Assessing cancer burden in rural India : An analysis by cause of death statistics, AV Ramanakumar, BB Yeole, Asian Pacific Journal of Cancer Prevention, Vol.6, 221-223, 2005.
  49. Respiratory Cancer –Population Based Survival in Mumbai, India, BB Yeole, Asian Pacific Journal of Cancer Prevention, Vol.6, 449-455, 2005.
  50. Social Inequalities in Cancer with special reference to South Asian Countries, AP Kurkure, BB Yeole, Asian Pacific Journal of Cancer Prevention, Vol.7, 36-40, 2006.
  51. Epidemiological Assessment of Lung cancer in India, B.B. Yeole and A.P. Kurkure, In the Oncology Knowledge Bank; Lung Cancer, Vol, 2006, pp 9-17, Mumbai, India, 2006.
  52. Social inequalities in Cancer, A.P. Kurkure & B.B. Yeole, In Cancer Awareness. Prevention and Control, : Strategies for South Asia pp.29-39, UICC, Geneva, 2006.
  53. Geographic Variation in Cancer Incidence and its Patterns in Urban Maharashtra, 2001. A.P. Kurkure, B.B. Yeole and S.S. Koyande. Asian Pacific Journal of Cancer Prevention. Vol. 7, pp 365-370, 2006.
  54. Role of Cancer Registries in Determining Cancer Mortality in Asia. B.B. Yeole, Asian Pacific Journal of Cancer Prevention. Vol. 7, pp 469-471, 2006.
  55. Cancer Incidence in Indian From three areas: Delhi, Mumbai, India and British Columbia, Canada, T.G. Hislop, C.D. Bajdik, S.R. Saroa, B.B. Yeole, M.C. Barrochetavena, Journal of Immigrants Minority Health, Vol.9, pp.221-227, 2006.
  56. Social inequalities in Cancer, AP Kurkure & BB Yeole. In Cancer Awareness, Prevention and Control : Strategies for South Asia, 29-39, UICC, Geneva, 2006.
  57. Geographic Variation in Cancer Incidence and its Patterns in Urban Maharashtra, 2001. AP Kurkure, BB Yeole, and SS Koyande. Asian Pacific Journal of Cancer Prevention. Vol. 7, 385-390, 2006.
  58. Role of Cancer Registries in Determining Cancer Mortality in Asia. BB Yeole, Asian Pacific Journal of Cancer Prevention. Vol.7, 469-471, 2006.
  59. Role of the cancer registries in determining cancer mortality in Asia, BB Yeole, Radiology And Oncology, 41(4), 211-214, 2007.
  60. Cancer Incidence in Indians from Three Areas: Delhi and Mumbai, India, and British Columbia, Canada, Thomas Gregory Hislop, Chris D, Bajdik, Sita Ram Saroa, BB Yeole, Maroa Cristina Barrochetavena, J Immigrant Minority Health, 9, 221-227, 2007.
  61. Trends in Cancer Incidence in Head and Neck Cancers in India, BB Yeole, Asian Pacific Journal of Cancer Prevention., Vol. 8, No 4, pp 607-612, 2008.
  62. Trends in Brain Cancer Incidence in India, BB Yeole, Asian Pacific Journal of Cancer Prevention., Vol. 9, No 2, pp. 267-270, 2008.
  63. Trends in Cancer Incidence in Female Breast, Cervix Uteri, Corpus Uteri, and Ovary in India, BB Yeole, APOJCP, Vol 9, No 1,

pp 119-122, 2008.

64. Trends in the Prostate Cancer in India, BB Yeole. APOJCP, Vol.9, No 1, pp 141-144, 2008.
65. Trends in Cancer Incidence in Esophagus, Stomach, Colon, Rectum, and Liver in Males in India, BB Yeole, APOJCP, Vol9, No 1, pp 97-100, 2008.
66. Geriatric Cancers in India: An Epidemiological and Demographic Overview, BB Yeole. AP Kurkure, SS Koyande, APOJCP, Vol. 9, No 2, pp.271-274, 2008.
67. Trends in Incidence in Non Hodgkin's Lymphoma in India, BB Yeole, APOJCP, Vol 9, No 3, pp 433-436, 2008.
68. Trends in Breast, Ovary, Cervical Cancer Incidence in Mumbai, India Over a 30 years period 1976-2006, Age – Period – Cohort, and Analysis. Preet Dhillon, B.B. Yeole, Rajesh Dixit, A.P. Kurkure and Freddy Bray, British Journal of Cancer, pp.1-8, 2011.

## APPENDIX

### Calculation of rates

**Age Specific Rates** are calculated by dividing the number of cases in each 5 year age and sex stratum by corresponding population estimates for that stratum and multiplying the product by 100,000 to give the rates per 100,000.

**Crude Rates** are calculated by same way using the total cancer cases and total cases and total population by sex.

**Age-Adjusted Rates** are calculated by summing the products of the age specific rates and the world standard population strata. They provide a rate which is independent of the age structure of the population of interest and are therefore useful in making comparisons between different populations, time periods.etc.

**Cumulative Rates** are calculated by multiplying the five year age specific rates per person by 5 and summing over age groups from 0-4 to 70-74. This rate is then expressed as a percentage. This rate is good indicator of life time risk.